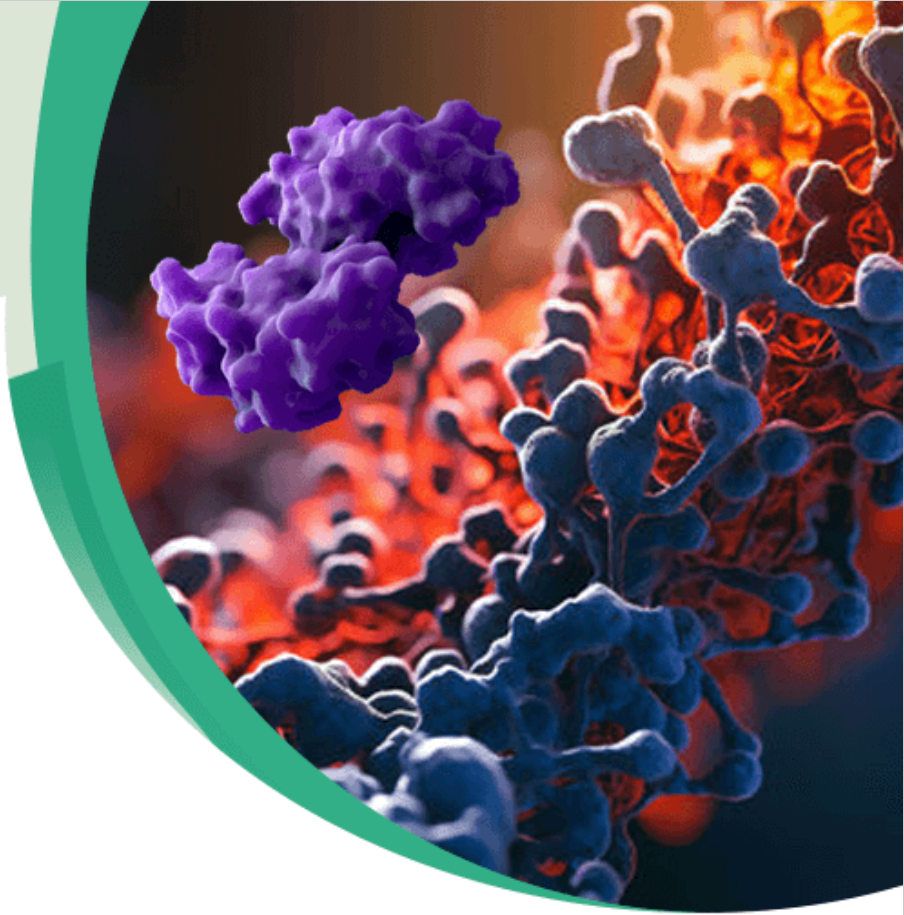


# Accelerate Your Research with Our R-PE Labeled BCMA/ TNFRSF17 Protein



Belonging to the TNF-Receptor superfamily, TNFRSF17 plays a critical role in B cell development and autoimmune response. It's an exclusive biomarker for mature B cells and also has significant relevance in multiple myeloma research. Our recombinant r-PE labeled BCMA/TNFRSF17 protein opens a world of possibilities in the pursuit of new medical treatments and breakthroughs.

## ■ Advantages:

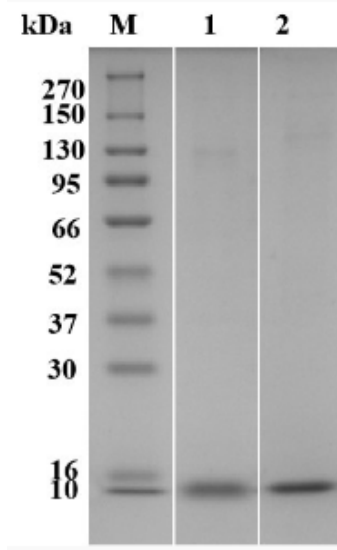
- |  |   |   |
|--|---|---|
| <ul style="list-style-type: none"><li>• Multiple tags &amp; species</li><li>• Verified bioactivity &amp; affinity.</li><li>• High stability</li><li>• Low immunogenicity</li></ul> | <ul style="list-style-type: none"><li>• Low Endotoxin</li><li>• High yield</li><li>• High purity</li><li>• Batch consistency</li><li>• Strong specificity</li></ul> | <ul style="list-style-type: none"><li>• Animal-free</li><li>• Beta-lactam antibiotics free</li><li>• In stock</li><li>• Global delivery</li></ul> |
|--|---|---|

## ■ Applications

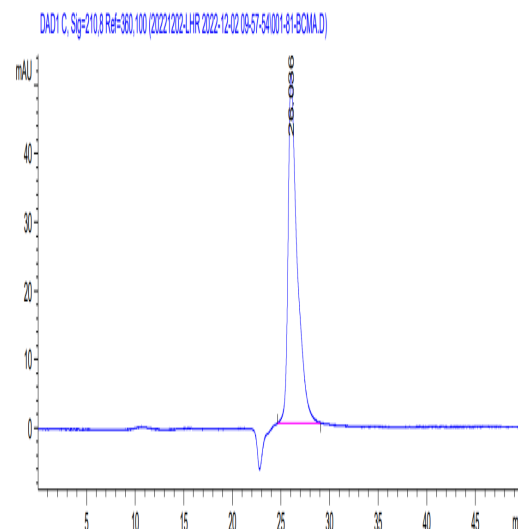
Our recombinant r-PE labeled TNFRSF17 protein is suitable for various applications including:

- B cell biology research
- Immune response simulations
- Small molecule screening
- Antibody development

## ■ Case Study and Bioactivity Assay



SDS-PAGE (Cat.No. TNFRSF17-03P) The Predicted Molecular Mass is about 6 kDa. (MAQQCYQNEY FDRLLIACKP CRLRCSNTPP VTCQHYCNTM KGTVNHHHHH H)



Bioactivity-FACS of TNFRSF17-223HP

## ■ Featured Product

Cat. No.	Identity	Species	Source	Tag	Price
<b>TNFRSF17-1817HP</b>	TNFRSF17	Human	HEK293	Fc, R-PE labeled	\$1,298.00 / 50ug \$1,898.00 / 100ug
<b>TNFRSF17-223HP</b>	TNFRSF17	Human	HEK293	His, PE labeled	\$1,298.00 / 50ug \$1,898.00 / 100ug
<b>TNFRSF17-2348HP</b>	TNFRSF17	Human	HEK293	Fc/His, R-PE labeled	\$1,298.00 / 50ug \$1,898.00 / 100ug

### USA

45-1 Ramsey Road, Shirley, NY 11967, USA

Tel: 1-631-559-9269 / 1-516-512-3133

Fax: 1-631-938-8127

### Germany

Gutenbergstraße 5, Kriftel, 65830 Germany

+491793975992

[info@creative-biomart.com](mailto:info@creative-biomart.com)

Global Locations



**Professional,  
Near Native Structure  
& PTMs,  
Global Delivery**

