

Recombinant Human A1BG Protein, GST-tagged

Cat. No. A1BG-002H **Lot. No.** (See product label)

SPECIFICATION

Product Overview	Human A1BG full-length ORF (AAH35719, 1 a.a. - 373 a.a.) recombinant protein with GST-tag at N-terminal.
Species	Human
Source	Wheat Germ
Description	The protein encoded by this gene is a plasma glycoprotein of unknown function. The protein shows sequence similarity to the variable regions of some immunoglobulin supergene family member proteins. [provided by RefSeq, Jul 2008]
Molecular Mass	66.77 kDa
AA Sequence	MAPVSWITPGLKTTAVCRGVLRGVTFLLRREGDHEFLEVPEAQEDVEATFPVHQPG NYSCSYRTDGEALSEPSATVTIEELAAPPPVLMHHGESSQVLHPGNKVTLCVAP LSGVDFQLRRGEKELLVPRSSTSPDRIFHLNAVALGDGGHYTCRYRLHDNQNQWS GDSAPVELILSDETLPAPEFSPEPEGRALRLRCLAPLEGARFALVREDRGGRRVHR FQSPAGTEALFELHNISVADSANYSCVYVDLKPPFGGSAPSERLELHVDGPPRPQL RATWSGAVLAGRDAVLRCEGPIPDVTFELLREGETKAVKTVRTPGAAANLELIFVGP QHAGNYRCRYRSWVPHTFESELSDPVELLVAES
Applications	Enzyme-linked Immunoabsorbent Assay; Western Blot (Recombinant protein); Antibody Production; Protein Array
Notes	Best use within three months from the date of receipt of this protein.

 Tel: 1-631-559-9269 1-516-512-3133

 Email: info@creative-biomart.com  Fax: 1-631-938-8127

 45-1 Ramsey Road, Shirley, NY 11967, USA

Storage Store at -80 centigrade. Aliquot to avoid repeated freezing and thawing.

Storage Buffer 50 mM Tris-HCl, 10 mM reduced Glutathione, pH=8.0 in the elution buffer.

GENE INFORMATION

Gene Name A1BG alpha-1-B glycoprotein [Homo sapiens]

Official Symbol A1BG

Synonyms A1BG; alpha-1-B glycoprotein; alpha-1B-glycoprotein; A1B; ABG; GAB; HYST2477; DKFZp686F0970;

Gene ID 1

mRNA Refseq NM_130786

Protein Refseq NP_570602

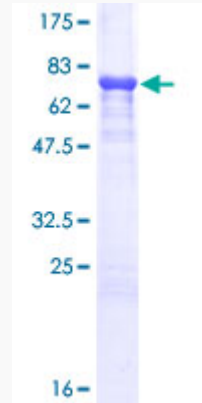
MIM 138670

UniProt ID P04217

 Tel: 1-631-559-9269 1-516-512-3133

 Email: info@creative-biomart.com  Fax: 1-631-938-8127

 45-1 Ramsey Road, Shirley, NY 11967, USA



12.5% SDS-PAGE Stained with Coomassie Blue.

 Tel: 1-631-559-9269 1-516-512-3133

 Email: info@creative-biomart.com  Fax: 1-631-938-8127

 45-1 Ramsey Road, Shirley, NY 11967, USA