

# Recombinant Full Length Human A2M Protein, C-Flag-tagged

Cat. No. A2M-1097HFL Lot. No. (See product label)

## SPECIFICATION

<b>Product Overview</b>	Recombinant Full Length Human A2M Protein, fused to Flag-tag at C-terminus, was expressed in Mammalian cells.
<b>Species</b>	Human
<b>Source</b>	Mammalian Cells
<b>Description</b>	The protein encoded by this gene is a protease inhibitor and cytokine transporter. It uses a bait-and-trap mechanism to inhibit a broad spectrum of proteases, including trypsin, thrombin and collagenase. It can also inhibit inflammatory cytokines, and it thus disrupts inflammatory cascades. Mutations in this gene are a cause of alpha-2-macroglobulin deficiency. This gene is implicated in Alzheimer's disease (AD) due to its ability to mediate the clearance and degradation of A-beta, the major component of beta-amyloid deposits. A related pseudogene, which is also located on the p arm of chromosome 12, has been identified.
<b>Form</b>	25 mM Tris HCl, pH 7.3, 100 mM glycine, 10% glycerol.
<b>Molecular Mass</b>	160.8 kDa
<b>AA Sequence</b>	MGKNKLLHPSLVLLLLVLLPTDASVSGKPQYMLVPSLLHTETTEKGCVLLSYLNETV TVSASLESVRGN RSLFTDLEAENDVLHCVAFAVPKSSSNEEVMFLTVQVKGPTQEF KKRTTVMVKNEDSLVFVQTDKSIYKP GQTVKFRVVSMDENFHPLNELIPLVYIQDPK GNRIAQQSFQLEGGLKQFSFPLSSEPFQGSYKVVVQKK SGRTEHPFTVEEFVL PKFEVQVTPKIIITILEEEMNVSVCGLYTYGKPVPGHVTVSICRKYS D ASDCHG EDS

 Tel: 1-631-559-9269 1-516-512-3133

 Email: [info@creative-biomart.com](mailto:info@creative-biomart.com)  Fax: 1-631-938-8127

 45-1 Ramsey Road, Shirley, NY 11967, USA

QAFCEKFSGQLNSHGCFYQQVTKVFQLKRKEYEMKLHTEAQIQEEGTVVELTGRQ  
 SSEITRTITKL SFVKVDShFRQGIPFFGQVRLVDGKGVPIPNKVFIRGNEANYYSNAT  
 TDEHGLVQFSINTTNVMGTSLT VRVNYKDRSPCYGYQWVSEEHEEAHHTAYLVFS  
 PSKSFVHLEPMSHELPCGHTQTVQAHYILNGGTLGL KKLSFYILIMAKGGIVRTGT  
 HGLLVKQEDMKGHFSISIPVKSADIAPVARLLIYAVLPTGDVIGDSAKYDV ENCLANKV  
 DLSFSPSQSLPASHAHLRVTAAPQSVCALRAVDQSVLLMKPDAELSASSVYNLLPEK  
 DLTGF PGPLNDQDDEDCINRHNVIYINGITYTPVSSTNEKDMYSFLEDMGLKAFTNSK  
 IRKPKMCPQLQQYEMHGP EGLRVGFYESDVMGRGHARLVHVEEPHTETVRKYFPE  
 TWIWDLVVNSAGVAEVGVTVPDTITWKAAGAF CLSEDAGLGISSTASLRAFQPPFFV  
 ELTMPYSVIRGEAFTLKATVLNLYPKCIRVSVQLEASPAFLAVPVE KEQAPHCICANG  
 RQTVSWAVTPKSLGNVNFTVSAEALESQELCGTEVPSVPEHGRKDTVIKPLLVEPE  
 GL EKETTFNSLLCPSGGEVSEELSLKLPNVVEESARASVSVLGDILGSAMQNTQNL  
 LQMPYGCGEQNMVLF APNIYVLDYLNQQLTPEVKSKAIGYLNTGYQRQLNYKH  
 DGSYSTFGERYGRNQGNTWLTAFVLKTFQ QARAYIFIDEAHITQALIWLSQRQKDN  
 GCFRSSGSLNNAIKGGVEDEVTL SAYITIALLEIPLTVTHPV VRNALFCLESAWKTA  
 QEGDHGSHVYTKALLAYAFALAGNQDKRKEVLKSLNEEA VKKDNSVHWERPQKPK  
 APVGHFYEPQAPSAEVEMTSYVLLAYLTAQPAPTSDELTSATNIVKWITKQNAQGG  
 FSSTQDTVVALHA LSKYGAATFTRTGKAAQVTIQSSGTFSSKFQVDNNRLLLQQV  
 SLPELPGEYSMKVTGEGCVYLQTSKY NILPEKEEFPFALGVQTLPTCDEPKAHTS  
 FQISLSVSYTGSRASNAIVDKMVSGFIPLKPTVKMLE RSNHVSRTVSSNHVLIY  
 LDKVSNQTLSSLFFTVLQDVPVRDLKPAIVKVYDYETDEFAIAEYNAPCSKD  
 LGNATRTRPLEQKLISEEDLAANDILDYKDDDDKV

<b>Purity</b>	> 80% as determined by SDS-PAGE and Coomassie blue staining.
<b>Stability</b>	Stable for 12 months from the date of receipt of the product under proper storage and handling conditions. Avoid repeated freeze-thaw cycles.
<b>Storage</b>	Store at -80 centigrade.

 Tel: 1-631-559-9269 1-516-512-3133

 Email: [info@creative-biomart.com](mailto:info@creative-biomart.com)  Fax: 1-631-938-8127

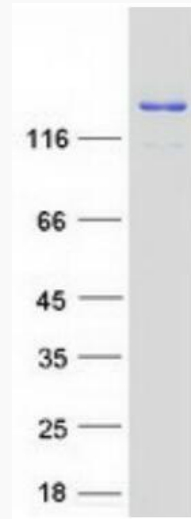
 45-1 Ramsey Road, Shirley, NY 11967, USA

<b>Concentration</b>	>50 ug/mL as determined by microplate BCA method.
<b>Preparation</b>	Recombinant protein was captured through anti-DDK affinity column followed by conventional chromatography steps.
<b>Protein Families</b>	Druggable Genome, Secreted Protein
<b>Protein Pathways</b>	Complement and coagulation cascades
<b>Full Length</b>	Full L.
<b>GENE INFORMATION</b>	
<b>Gene Name</b>	<a href="#">A2M alpha-2-macroglobulin [ Homo sapiens (human) ]</a>
<b>Official Symbol</b>	<a href="#">A2M</a>
<b>Synonyms</b>	A2MD; CPAMD5; FWP007; S863-7
<b>Gene ID</b>	<a href="#">2</a>
<b>mRNA Refseq</b>	<a href="#">NM_000014.6</a>
<b>Protein Refseq</b>	<a href="#">NP_000005.3</a>
<b>MIM</b>	<a href="#">103950</a>
<b>UniProt ID</b>	<a href="#">P01023</a>

 Tel: 1-631-559-9269 1-516-512-3133

 Email: [info@creative-biomart.com](mailto:info@creative-biomart.com)  Fax: 1-631-938-8127

 45-1 Ramsey Road, Shirley, NY 11967, USA



Coomassie blue staining of purified A2M protein.

 Tel: 1-631-559-9269 1-516-512-3133

 Email: [info@creative-biomart.com](mailto:info@creative-biomart.com)  Fax: 1-631-938-8127

 45-1 Ramsey Road, Shirley, NY 11967, USA