

Recombinant Human A2M Protein, N-His-tagged

Cat. No. A2M-13H Lot. No. (See product label)

SPECIFICATION

Product Overview	Recombinant Human A2M Protein, fused to His-tag at N-terminus, was expressed in HEK293 cells.
Species	Human
Source	HEK293
Description	<p>The protein encoded by this gene is a protease inhibitor and cytokine transporter. It uses a bait-and-trap mechanism to inhibit a broad spectrum of proteases, including trypsin, thrombin and collagenase. It can also inhibit inflammatory cytokines, and it thus disrupts inflammatory cascades. Mutations in this gene are a cause of alpha-2-macroglobulin deficiency. This gene is implicated in Alzheimer's disease (AD) due to its ability to mediate the clearance and degradation of A-beta, the major component of beta-amyloid deposits. A related pseudogene, which is also located on the p arm of chromosome 12, has been identified.</p>
Form	Lyophilized from a 0.2 µ filtered solution in PBS (pH 7.4).
Molecular Mass	160 kDa
Endotoxin	<0.5 EU per g of the protein as determined by the LAL method.
Purity	>95% as determined by SDS-PAGE under reducing conditions and visualized by Coomassie blue staining.

 Tel: 1-631-559-9269 1-516-512-3133

 Email: info@creative-biomart.com  Fax: 1-631-938-8127

 45-1 Ramsey Road, Shirley, NY 11967, USA

Usage	This product is furnished for LABORATORY RESEARCH USE ONLY. Not for diagnostic or therapeutic use.
Storage	Upon arrival, the protein may be stored for 2 weeks at 4 centigrade. For long term storage, it is recommended to store at -20 centigrade or -80 centigrade in appropriate aliquots. Avoid repeated freeze-thaw cycles.
Concentration	Determined by BCA protein assay.
Reconstitution	Briefly spin the vial and bring the contents to the bottom prior to opening. It is recommended to reconstitute at 0.5 - 1.0 mg/mL with sterile deionized water.
Shipping	Ice packs

GENE INFORMATION

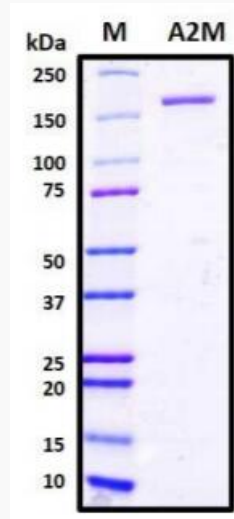
Gene Name	A2M alpha-2-macroglobulin [Homo sapiens (human)]
Official Symbol	A2M
Synonyms	A2MD; CPAMD5; FWP007; S863-7
Gene ID	2
mRNA Refseq	NM_000014.6
Protein Refseq	NP_000005.3
MIM	103950
UniProt ID	P01023


 Tel: 1-631-559-9269 1-516-512-3133

 Email: info@creative-biomart.com  Fax: 1-631-938-8127


 45-1 Ramsey Road, Shirley, NY 11967, USA

SDS-PAGE



 Tel: 1-631-559-9269 1-516-512-3133

 Email: info@creative-biomart.com  Fax: 1-631-938-8127

 45-1 Ramsey Road, Shirley, NY 11967, USA