

Recombinant Human A2M protein(1161-1250 aa), C-His-tagged

Cat. No. A2M-2504H Lot. No. (See product label)

SPECIFICATION

Product Overview	Recombinant Human A2M protein(P01023)(1161-1250 aa), fused with C-terminal His tag, was expressed in E. coli.
Species	Human
Source	E.coli
ProteinLength	1161-1250 aa
Form	0.15 M Phosphate buffered saline
Molecular Mass	11.5 kDa
Storage	Shipped on dry ice. Avoid repeated freeze-thaw cycles. Upon receipt, 2 days when stored at 2 to 8 °C after thawing. Up to 12 months when aliquoted and stored at -20 to -80°C.
Reconstitution	It is recommended that sterile water be added to the vial to prepare a stock solution of 0.2 ug/ul. Centrifuge the vial at 4°C before opening to recover the entire contents.
AA Sequence	DKRKEVLKSLNEEAVKKDNSVHWERPQKPKAPVGHFYEPQAPSAEEMTSYVLLAY LTAQPAPTSDELTSATNIVKWITKQQNAQGGFSS

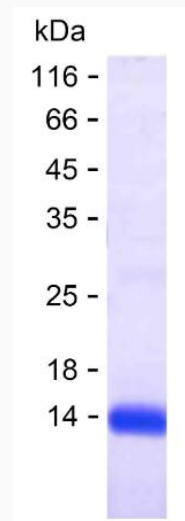
GENE INFORMATION

 Tel: 1-631-559-9269 1-516-512-3133

 Email: info@creative-biomart.com  Fax: 1-631-938-8127

 45-1 Ramsey Road, Shirley, NY 11967, USA

Gene Name	A2M alpha-2-macroglobulin [Homo sapiens]
Official Symbol	A2M
Synonyms	A2M; alpha-2-macroglobulin; CPAMD5; FWP007; S863 7; alpha-2-M; C3 and PZP-like alpha-2-macroglobulin domain-containing protein 5; A2MD; S863-7; DKFZp779B086;
Gene ID	2
mRNA Refseq	NM_000014
Protein Refseq	NP_000005
MIM	103950
UniProt ID	P01023

SDS-PAGE


 Tel: 1-631-559-9269 1-516-512-3133

 Email: info@creative-biomart.com  Fax: 1-631-938-8127

 45-1 Ramsey Road, Shirley, NY 11967, USA