

Recombinant Full Length Human A2ML1 Protein, C-Flag-tagged

Cat. No. A2ML1-1318HFL **Lot. No.** (See product label)

SPECIFICATION

Product Overview	Recombinant Full Length Human A2ML1 Protein, fused to Flag-tag at C-terminus, was expressed in Mammalian cells.
Species	Human
Source	Mammalian Cells
Description	This gene encodes a member of the alpha-macroglobulin superfamily. The encoded protein is thought to be an N-glycosylated monomeric protein that acts as an inhibitor of several proteases. It has been shown to form covalent interactions with proteases, and has been reported as the p170 antigen recognized by autoantibodies in the autoimmune disease paraneoplastic pemphigus (PNP; PMID:20805888). Mutations in these gene have also been associated with some cases of Noonan syndrome (NS; PMID:24939586) as well as some cases of otitis media (PMID:26121085). Alternative splicing results in multiple transcript variants encoding different isoforms.
Form	25 mM Tris HCl, pH 7.3, 100 mM glycine, 10% glycerol.
Molecular Mass	161 kDa
AA Sequence	MWAQLLLGLLALSPAIAEELPNYLVTLPARLNFPSVQKVCCLDLSPGYSVDVKFTVTLET KDKTQKLLEYSGLKKRHLHCISFLVPPPAGGTEEVATIRVSGVGNNISFEEKKKVLIQ RQGNGTFVQTDKPLYTPGQQVYFR IVTMDSNFVPVNDKYSMVELQDPNSNRIAQW LEVVPEQGIVDLSFQLAPEAMLGTYTVAVAEGKTFGTFS VEEYVLPKFKVEVVEPKE

 Tel: 1-631-559-9269 1-516-512-3133

 Email: info@creative-biomart.com  Fax: 1-631-938-8127

 45-1 Ramsey Road, Shirley, NY 11967, USA

LSTVQESFLVKICCRYTYGKPM LGAVQVSVCQKANTYWYREVEREQLPDKCR NLS
 GQTDKTGCF SAPVDMATFDLIGYAYSHQINIVATVVEEGTGVEANATQNIYIS PQMG
 SMTFEDTSNF YHPNFPFSGKIRVRGHDDSFLKNHLVFLVIYGTNGTFNQLVTDNN
 GLAPFTLETSGWNGTDVSLEGKFQ MEDLVYNPEQVPRYYQNAYLHLRPFYSTTRS
 FLGIHRLNGPLKCGQPQEVLDYIDPADASPDQEISFS YYLIGKGS LVM EGQKHLN
 SKKKGLKASFSLTFTSRLAPDPSLVIIAIFPSGGVVADKIQFSVEMCFDN QVSLGF
 SPSQQLPGA EVELQLQAAPGSLCALRAVDES VLLL RP DRELSNRSVYGMFPFWYG
 HYPYQVAEY DQCPVSGPWDFPQPLIDPMPQGHSSQRSIIWRPSFSEG TDLFSFFR
 DVGLKILSNAKIKKPVDCSHRSPE YSTAMGAGGGHPEAFESSTPLHQAEDSQVRQY
 FPETWLWDLFPIGNSGKEAVHVTVPDAITEWKAMSFCT SQRGFGLSPTVGLTAFK
 PFFVDLTL PYSVVRGESFRLTATIFNYLKDCIRVQTDLAKSHEYQLESWADS QTSSC
 LCADEAKTHHWNITAVKLGHINFTISTKILDSNEPCGGQKGFVPQKGRSDTLIKPVLV
 KPEGVLV EKTHSSLLCPKGKVAS ESVSLELPVDIVPDSTKAYVTVLGDIMGTALQNL
 DGLVQMPSGCGEQNMVLFAP IYVLQYLEKAGLLTEEIRSRAVGFLEIGYQKELMYK
 HSNGSYSAFGERDGNNGNTWLTAFTVKCFGQAQK FIFIDPKNIQDALKWMAGNQLP
 SGCYANVGNLLHTAMKGGVDDEVSLTAYVTAALLEMGKD VDDPMVSQG LRCLKNS
 ATSTTNLYTQALLAYIFSLAGEMDIRNILLKQLDQQAIISGESIYWSQKPTPSSNASPW
 SEPA AVDVELTAYALLAQLTKPSLTQKEIAKATSIVAWLAKQRNAYGGFSSTQDTVV
 ALQALAKYATTAYMPSE EINLVVKSTENFQRTFN IQSVNRLVFQQDTLPNVPGMYTL
 EASGQGC VYVQTVLRYNLPPTNMKTF SLS VEIGKARCEQPTSPRSLTLTIHTSYVG
 SRSSSNMAIVEVKMLSGFSPMEGTNQLLLQQPLVKKVEFGTDT
 LNIYLDELIKNTQTYTFTISQSVLVTNLKPATIKVYDYLLPDEQATI QYSDPCETRTRPL
 EQKLISEEDLAANDILDYKDDDDKV

Purity > 80% as determined by SDS-PAGE and Coomassie blue staining.

Stability Stable for 12 months from the date of receipt of the product under proper storage and handling conditions. Avoid repeated freeze-thaw cycles.

Storage Store at -80 centigrade.

 Tel: 1-631-559-9269 1-516-512-3133

 Email: info@creative-biomart.com  Fax: 1-631-938-8127

 45-1 Ramsey Road, Shirley, NY 11967, USA

Concentration >50 ug/mL as determined by microplate BCA method.

Preparation Recombinant protein was captured through anti-DDK affinity column followed by conventional chromatography steps.

Full Length Full L.

GENE INFORMATION

Gene Name A2ML1 alpha-2-macroglobulin like 1 [Homo sapiens (human)]

Official Symbol A2ML1

Synonyms OMS; p170; CPAMD9

Gene ID 144568

mRNA Refseq NM_144670.6

Protein Refseq NP_653271.3

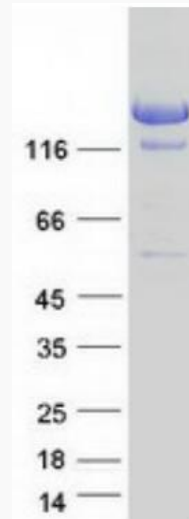
MIM 610627

UniProt ID B3KVV6

 Tel: 1-631-559-9269 1-516-512-3133

 Email: info@creative-biomart.com  Fax: 1-631-938-8127

 45-1 Ramsey Road, Shirley, NY 11967, USA



Coomassie blue staining of purified A2ML1 protein.

 Tel: 1-631-559-9269 1-516-512-3133

 Email: info@creative-biomart.com  Fax: 1-631-938-8127

 45-1 Ramsey Road, Shirley, NY 11967, USA