

Recombinant Human A2ML1 Protein, Myc/DDK-tagged, C13 and N15-labeled

Cat. No. A2ML1-1627H **Lot. No.** (See product label)

SPECIFICATION

Product Overview	A2ML1 MS Standard C13 and N15-labeled recombinant protein (NP_653271) with a C-terminal MYC/DDK tag, was expressed in HEK293 cells.
Species	Human
Source	HEK293
Description	This gene encodes a member of the alpha-macroglobulin superfamily. The encoded protein is thought to be an N-glycosylated monomeric protein that acts as an inhibitor of several proteases. It has been shown to form covalent interactions with proteases, and has been reported as the p170 antigen recognized by autoantibodies in the autoimmune disease paraneoplastic pemphigus (PNP; PMID:20805888). Mutations in these gene have also been associated with some cases of Noonan syndrome (NS; PMID:24939586) as well as some cases of otitis media (PMID:26121085). Alternative splicing results in multiple transcript variants encoding different isoforms.
Molecular Mass	161 kDa
AA Sequence	MWAQLLLGMLALSPAIAEELPNYLVTLPARLNFPSVQKVCLDLSPGYSDVKFTVTLET KDKTQKLLLEYSGLKKRHLHCISFLVPPPAGGTEEVATIRVSGVGNISFEEKKKVLIQ RQGNGTFVQTDKPLYTPGQQVYFRIVTMDSNFVPVNDKYSMVELQDPNSNRIAQW LEVVPQQGIVDLSFQLAPEAMLGTYTVAVAEGKTFGTFSVEEYVLPKFKVEVVEPKE LSTVQESFLVKICCRYTYGKPMLGAVQVSVCQKANTYWYREVEREQLPDKCRNLGS

 Tel: 1-631-559-9269 1-516-512-3133

 Email: info@creative-biomart.com  Fax: 1-631-938-8127

 45-1 Ramsey Road, Shirley, NY 11967, USA

QTDKTGCF SAPVDMATFDLIGYAYSHQINIVATVVEEGTGVEANATQNIYISPMGS
 MTFEDTSNFYHPNFPFSGKIRVRGHDDSFLKNHLVFLVIYGTNGTFNQTLVTDNGL
 APFTLETSGWNGTDVSLEGKFQMEDLVYNPEQVPRYYQNAYLHLRPFYSTTRSFLG
 IHRLNGPLKCGQPQEVLDVYYIDPADASPDQEISFSYYLIGKGSVMGQKHLNSKK
 KGLKASFSLSLTFTSRLAPDPSLVIYAIFPSGGVVADKIQFSVEMCFDNQVSLGFSPS
 QQLPGALEVELQLQAAPGSLCALRAVDESLLLLRPDRELSNRSVYGMFPFWYGHYP
 YQVAEYDQCPVSGPWDFPQPLIDPMPQGHSSQRSIIWRPSFSEGTDLFSFFRDVGL
 KILSNAKIKKPVDCSHRSPEYSTAMGAGGGHPEAFESSTPLHQAEDSQVRQYFPET
 WLWDLFPIGNSGKEAVHVTVPDAITEWKAMSFCTSQSRGFGLSPTVGLTAFKPFV
 DLTLPSVVRGESFRLTATIFNYLKDCIRVQTDLAKSHEYQLESWADSQTSSCLCAD
 EAKTHHWNITAVKLGHINFITISKILDSNEPCGGQKGFVPQKGRSDTLIKPVLKPEG
 VLVEKTHSLLCPKGKVAESVSLELPVDIVPDSTKAYVTVLGDIMGTALQNL DGLVQ
 MPSSGCGEQNMVLFAPIIYVLQYLEKAGLLTEEIRSRVGFLEIGYQKELMYKHSNGSY
 SAFGERDGNNGNTWLTAFVTKCFGQAQKFIFIDPKNIQDALKWMAGNQLPSGCIYANV
 GNLLHTAMKGGVDDEVSLTAYVTAALLEMGKD VDDPMVSQGLRCLKNSATSTTNLY
 TQALLAYIFSLAGEMDIRNILLKQLDQQAIISGESIYWSQKPTPSSNASPWSEPAAVDV
 ELTAYALLAQLTKPSLTQKEIAKATSIVAWLAKQRNAYGGFSSTQDTVVALQALAKYA
 TTAYMPSEEINLVVKSTENFQRTFNISVNRLVFQQDTPNVPVGMYLEASGQGCYV
 VQTVLRYNILPPTNMKTFSLSVEIGKARCEQPTSPRSLTLTIHTSYVGSRSSSNMAIV
 EVKMLSGFSPMEGTNQLLLQQPLVKKVEFGTDLNIIYDELIKNTQTYTFTISQSVLV
 TNLKPATIKVYDYLLPDEQATIQYSDPCETRTRPLEQKLISEEDLAANDILDYKDDDDK
 V

Purity > 80% as determined by SDS-PAGE and Coomassie blue staining

Stability Stable for 3 months from receipt of products under proper storage and handling conditions.

Storage Store at -80 centigrade. Avoid repeated freeze-thaw cycles.

 Tel: 1-631-559-9269 1-516-512-3133

 Email: info@creative-biomart.com  Fax: 1-631-938-8127

 45-1 Ramsey Road, Shirley, NY 11967, USA

Concentration 50 µg/mL as determined by BCA

Storage Buffer 100 mM glycine, 25 mM Tris-HCl, pH 7.3.

GENE INFORMATION

Gene Name [A2ML1 alpha-2-macroglobulin-like 1 \[Homo sapiens \(human\) \]](#)

Official Symbol [A2ML1](#)

Synonyms A2ML1; alpha-2-macroglobulin-like 1; C3 and PZP like, alpha 2 macroglobulin domain containing 9, CPAMD9; alpha-2-macroglobulin-like protein 1; FLJ25179; C3 and PZP-like, alpha-2-macroglobulin domain containing 9; CPAMD9; FLJ16045; FLJ39129; FLJ41597; FLJ41598; FLJ41607; DKFZp686C1729; DKFZp686D2011; DKFZp686G1812; DKFZp686L1821; DKFZp686O1010;

Gene ID [144568](#)

mRNA Refseq [NM_144670](#)

Protein Refseq [NP_653271](#)

MIM [610627](#)

UniProt ID [A8K2U0](#)

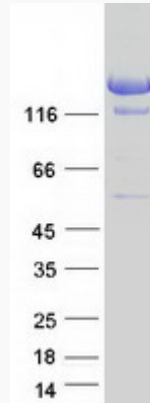
 Tel: 1-631-559-9269 1-516-512-3133

 Email: info@creative-biomart.com  Fax: 1-631-938-8127

 45-1 Ramsey Road, Shirley, NY 11967, USA



SDS-PAGE



Tel: 1-631-559-9269 1-516-512-3133

Email: info@creative-biomart.com Fax: 1-631-938-8127

45-1 Ramsey Road, Shirley, NY 11967, USA