

Recombinant Rat A4galt Protein, His-tagged

Cat. No. A4galt-485R Lot. No. (See product label)

SPECIFICATION

Product Overview	Recombinant Rat A4galt(Cys142~Thr357) fused with His tag at N-terminal was expressed in E. coli.
Species	Rat
Source	E.coli
ProteinLength	Cys142~Thr357
Form	PBS, pH7.4, containing 0.01% SKL, 1mM DTT, 5% Trehalose and Proclin300.
Molecular Mass	28.9kDa
Endotoxin	<1.0EU per 1ug (determined by the LAL method)
Purity	> 95%
Applications	Positive Control; Immunogen; SDS-PAGE; WB. If bio-activity of the protein is needed, please check active protein
Stability	The thermal stability is described by the loss rate. The loss rate was determined by accelerated thermal degradation test, that is, incubate the protein at 37 centigrade for 48h, and no obvious degradation and precipitation were observed. The loss rate is less than 5% within the expiration date under appropriate storage condition.

 Tel: 1-631-559-9269 1-516-512-3133

 Email: info@creative-biomart.com  Fax: 1-631-938-8127

 45-1 Ramsey Road, Shirley, NY 11967, USA

Storage Avoid repeated freeze/thaw cycles. Store at 2-8 centigrade for one month. Aliquot and store at -80 centigrade for 12 months.

Reconstitution Reconstitute in PBS or others

GENE INFORMATION

Gene Name A4galt alpha 1,4-galactosyltransferase [*Rattus norvegicus*]

Official Symbol A4galt

Synonyms A4GALT; alpha 1,4-galactosyltransferase; lactosylceramide 4-alpha-galactosyltransferase; Gb3 synthase; alpha4Gal-T1; globotriaosylceramide synthase; alpha-1,4-galactosyltransferase; alpha-1,4-N-acetylglucosaminyltransferase; UDP-galactose:beta-D-galactosyl-beta1-R 4-alpha-D-galactosyltransferase; Gb3;

Gene ID 63888

mRNA Refseq NM_022240

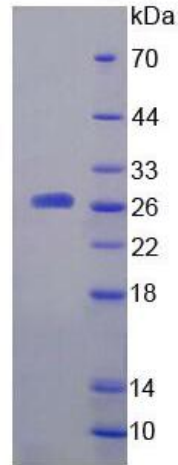
Protein Refseq NP_071576

UniProt ID Q9JI93

 Tel: 1-631-559-9269 1-516-512-3133

 Email: info@creative-biomart.com  Fax: 1-631-938-8127

 45-1 Ramsey Road, Shirley, NY 11967, USA



15% SDS-PAGE

 Tel: 1-631-559-9269 1-516-512-3133

 Email: info@creative-biomart.com  Fax: 1-631-938-8127

 45-1 Ramsey Road, Shirley, NY 11967, USA