

Recombinant Human AADAT Protein, GST-tagged

Cat. No. AADAT-016H Lot. No. (See product label)

SPECIFICATION

Product Overview Human AADAT partial ORF (NP_057312, 326 a.a. - 425 a.a.) recombinant protein with GST-tag at N-terminal.

Species Human

Source Wheat Germ

Description This gene encodes a protein that is highly similar to mouse and rat kynurenine aminotransferase II. The rat protein is a homodimer with two transaminase activities. One activity is the transamination of alpha-amino adipic acid, a final step in the saccaropine pathway which is the major pathway for L-lysine catabolism. The other activity involves the transamination of kynurenine to produce kynurenine acid, the precursor of kynurenic acid which has neuroprotective properties. Several transcript variants encoding two different isoforms have been found for this gene. [provided by RefSeq, Nov 2013]

Molecular Mass 36.74 kDa

AA Sequence YSNQKDAILAAADKWLTLGLAEWHVPAAGMFLWIKVKGINDVKELIEEKAVKMGVLMMLPGNAFYVDSSAPSPYLRASFSSASPEQMDVAFQVLAQLIKESL

Applications Enzyme-linked Immunoabsorbent Assay
Western Blot (Recombinant protein)
Antibody Production
Protein Array

 Tel: 1-631-559-9269 1-516-512-3133

 Email: info@creative-biomart.com  Fax: 1-631-938-8127

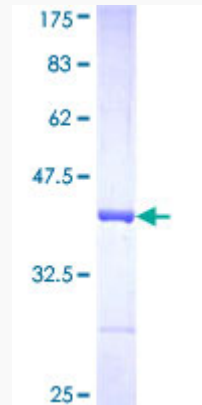
 45-1 Ramsey Road, Shirley, NY 11967, USA

Notes	Best use within three months from the date of receipt of this protein.
Storage	Store at -80 centigrade. Aliquot to avoid repeated freezing and thawing.
Storage Buffer	50 mM Tris-HCl, 10 mM reduced Glutathione, pH=8.0 in the elution buffer.
GENE INFORMATION	
Gene Name	AADAT aminoadipate aminotransferase [Homo sapiens]
Official Symbol	AADAT
Synonyms	AADAT; aminoadipate aminotransferase; kynurenine/alpha-aminoadipate aminotransferase, mitochondrial; KAT2; KATII; kynurenine aminotransferase II; L kynurenine/alpha aminoadipate aminotransferase; KAT/AadAT; 2-aminoadipate transaminase; 2-aminoadipate aminotransferase; alpha-aminoadipate aminotransferase; kynurenine--oxoglutarate transaminase II; kynurenine--oxoglutarate aminotransferase II;
Gene ID	51166
mRNA Refseq	NM_016228
Protein Refseq	NP_057312
MIM	611754
UniProt ID	Q8N5Z0

 Tel: 1-631-559-9269 1-516-512-3133

 Email: info@creative-biomart.com  Fax: 1-631-938-8127

 45-1 Ramsey Road, Shirley, NY 11967, USA



12.5% SDS-PAGE Stained with Coomassie Blue.

 Tel: 1-631-559-9269 1-516-512-3133

 Email: info@creative-biomart.com  Fax: 1-631-938-8127

 45-1 Ramsey Road, Shirley, NY 11967, USA