

Active Recombinant Full Length Human AADAT Protein, C-Flag-tagged

Cat. No. AADAT-570HFL Lot. No. (See product label)

SPECIFICATION

Product Overview

Recombinant Full Length Human AADAT Protein, fused to Flag-tag at C-terminus, was expressed in Mammalian cells.

Species

Human

Source

Mammalian Cells

Description

This gene encodes a protein that is highly similar to mouse and rat kynurenine aminotransferase II. The rat protein is a homodimer with two transaminase activities. One activity is the transamination of alpha-amino adipic acid, a final step in the saccaropine pathway which is the major pathway for L-lysine catabolism. The other activity involves the transamination of kynurenine to produce kynurenine acid, the precursor of kynurenic acid which has neuroprotective properties. Several transcript variants encoding two different isoforms have been found for this gene.

Form

25 mM Tris HCl, pH 7.3, 100 mM glycine, 10% glycerol.

Bio-activity

The specific activity of KATII was determined by measuring the product Kynurenic acid formation from a conversion of Kynurenine. The reaction was carried out at 37 centigrade for 15min in the buffer containing PBS, pH7.4, 2mM a-oxoglutarate, 40M PLP (pyridoxal 5'-phosphate), and 0.5mM kynurenine as the substrate.

Molecular Mass

47.2 kDa

 Tel: 1-631-559-9269 1-516-512-3133

 Email: info@creative-biomart.com  Fax: 1-631-938-8127

 45-1 Ramsey Road, Shirley, NY 11967, USA



AA Sequence

MNYARFITAASAARNPSPIRTMTDILSRGPKSMISLAGGLPNPNMFPFKTAVITVENG
 KTIQFGEEMMKR ALQYSPSAGIPELLSWLKQLQIKLHNPPTIHYPPSQGQMDLCVTS
 GSQQGLCKVFEMIINPGDNVLLDEP AYSGLTQSLHPLGCNIINVASDESGIVPDSLRLD
 ILSRWKPEDAKNPQKNTPKFLYTPNGNNPTGNSLTS ERKKEIYELARKYDFLIIEDD
 PYYFLQFNKFRVPTFLSMDVDGRVIRADSFSKIISGLRIGFLTGPKPL IERVILHIQVS
 TLHPSTFNQLMISQLLHEWGEEGFMAHVDRVIDFYSNQKDAILAAADKWLTLGLAEW
 HVP AAGMFLWIKVKGINDVKELIEEKAVKMGVLMPLPGNAFYVDSSAPSPYLRASFSS
 ASPEQMDVAFQVLAQL
 IKESLTRTRPLEQKLISEEDLAANDILDYKDDDDKV

Purity > 80% as determined by SDS-PAGE and Coomassie blue staining.

Stability Stable for 12 months from the date of receipt of the product under proper storage and handling conditions. Avoid repeated freeze-thaw cycles.

Storage Store at -80 centigrade.

Concentration >50 ug/mL as determined by microplate BCA method.

Preparation Recombinant protein was captured through anti-DDK affinity column followed by conventional chromatography steps.

Protein Pathways Lysine biosynthesis, Lysine degradation, Metabolic pathways, Tryptophan metabolism

Full Length Full L.

GENE INFORMATION

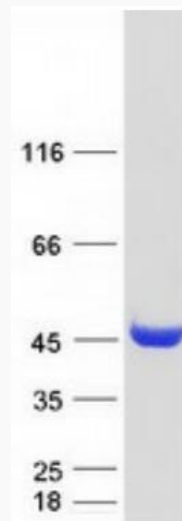
Gene Name [AADAT amino adipate aminotransferase \[Homo sapiens \(human\) \]](#)

Tel: 1-631-559-9269 1-516-512-3133

Email: info@creative-biomart.com Fax: 1-631-938-8127

45-1 Ramsey Road, Shirley, NY 11967, USA

Official Symbol	AADAT
Synonyms	KAT2; KATII; KYAT2
Gene ID	51166
mRNA Refseq	NM_016228.4
Protein Refseq	NP_057312.1
MIM	611754
UniProt ID	Q8N5Z0



Coomassie blue staining of purified AADAT protein.

 Tel: 1-631-559-9269 1-516-512-3133

 Email: info@creative-biomart.com  Fax: 1-631-938-8127

 45-1 Ramsey Road, Shirley, NY 11967, USA