

## Recombinant Human AAGAB Protein, GST-tagged

**Cat. No.** AAGAB-4236H    **Lot. No.** (See product label)

### SPECIFICATION

<b>Product Overview</b>	Human FLJ11506 full-length ORF ( AAH58886.1, 1 a.a. - 315 a.a.) recombinant protein with GST-tag at N-terminal.
<b>Species</b>	Human
<b>Source</b>	Wheat Germ
<b>Description</b>	The protein encoded by this gene interacts with the gamma-adaptin and alpha-adaptin subunits of complexes involved in clathrin-coated vesicle trafficking. Mutations in this gene are associated with type I punctate palmoplantar keratoderma. Alternatively spliced transcript variants have been found for this gene. [provided by RefSeq, Dec 2012]
<b>Molecular Mass</b>	61 kDa
<b>AA Sequence</b>	MAAGVPCALVTSCSSVFSGDQLVQHILGTEDLIVEVTSNDAVRFYPWTIDNKYYASADI NLCVVPNKFLVTAEIAESVQAFVVFYDSTQKSGLDVSSWLPLAKAWLPEVMILVCD RVSEGINRQKAQEWCIKHGFELVELSPEELPEEDDDFPESTGVKRIVQALNANVW SNVVMKNDRNQGFSLNLSLTGTNHSIGSADPCHPEQPPLPAADSTESLSDHRGGAS NTTDAQVDSIVDPMLDLDIQELASLTTGGGDVENFERLFSKLEKMKDKAATLPHEQR KVHAEKVAKAFWMAIGGDRDEIEGLSSDEEH
<b>Applications</b>	Enzyme-linked Immunoabsorbent Assay Western Blot (Recombinant protein) Antibody Production

 Tel: 1-631-559-9269    1-516-512-3133

 Email: [info@creative-biomart.com](mailto:info@creative-biomart.com)     Fax: 1-631-938-8127

 45-1 Ramsey Road, Shirley, NY 11967, USA

**Protein Array**

<b>Notes</b>	Best use within three months from the date of receipt of this protein.
<b>Storage</b>	Store at -80 centigrade. Aliquot to avoid repeated freezing and thawing.
<b>Storage Buffer</b>	50 mM Tris-HCl, 10 mM reduced Glutathione, pH=8.0 in the elution buffer.

**GENE INFORMATION**

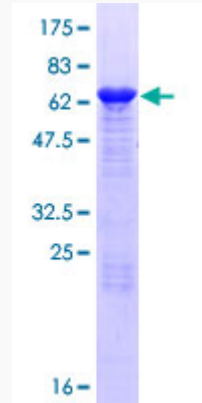
<b>Gene Name</b>	AAGAB alpha and gamma adaptin binding protein [ Homo sapiens (human) ]
<b>Official Symbol</b>	AAGAB
<b>Synonyms</b>	AAGAB; alpha and gamma adaptin binding protein; p34; KPPP1; PPKP1; PPKP1A; alpha- and gamma-adaptin-binding protein p34; Alpha- And Gamma-Adaptin Binding Protein; Alpha- And Gamma-Adaptin-Binding Protein P34
<b>Gene ID</b>	79719
<b>mRNA Refseq</b>	NM_001271885
<b>Protein Refseq</b>	NP_001258814
<b>MIM</b>	614888
<b>UniProt ID</b>	Q6PD74

 Tel: 1-631-559-9269 1-516-512-3133

 Email: [info@creative-biomart.com](mailto:info@creative-biomart.com)  Fax: 1-631-938-8127

 45-1 Ramsey Road, Shirley, NY 11967, USA

**Quality Control  
Testing**



12.5% SDS-PAGE Stained with Coomassie Blue.

 Tel: 1-631-559-9269 1-516-512-3133

 Email: [info@creative-biomart.com](mailto:info@creative-biomart.com)  Fax: 1-631-938-8127

 45-1 Ramsey Road, Shirley, NY 11967, USA