

Recombinant Human AANAT Protein, GST-tagged

Cat. No. AANAT-021H Lot. No. (See product label)

SPECIFICATION

Product Overview	Human AANAT partial ORF (NP_001079.1, 1 a.a. - 79 a.a.) recombinant protein with GST-tag at N-terminal.
Species	Human
Source	Wheat Germ
Description	The protein encoded by this gene belongs to the acetyltransferase superfamily. It is the penultimate enzyme in melatonin synthesis and controls the night/day rhythm in melatonin production in the vertebrate pineal gland. Melatonin is essential for the function of the circadian clock that influences activity and sleep. This enzyme is regulated by cAMP-dependent phosphorylation that promotes its interaction with 14-3-3 proteins and thus protects the enzyme against proteasomal degradation. This gene may contribute to numerous genetic diseases such as delayed sleep phase syndrome. Alternatively spliced transcript variants encoding different isoforms have been found for this gene. [provided by RefSeq, Oct 2009]
Molecular Mass	34.43 kDa
AA Sequence	MSTQSTHPLKPEAPRLPPGIPESPSCQRRHTLPASEFRCLTPEDAVSAFEIEREAFIS VLGVCPLYLDEIRHFLTLCPE
Applications	Enzyme-linked Immunoabsorbent Assay Western Blot (Recombinant protein) Antibody Production

 Tel: 1-631-559-9269 1-516-512-3133

 Email: info@creative-biomart.com  Fax: 1-631-938-8127

 45-1 Ramsey Road, Shirley, NY 11967, USA

Protein Array

Notes	Best use within three months from the date of receipt of this protein.
Storage	Store at -80 centigrade. Aliquot to avoid repeated freezing and thawing.
Storage Buffer	50 mM Tris-HCl, 10 mM reduced Glutathione, pH=8.0 in the elution buffer.

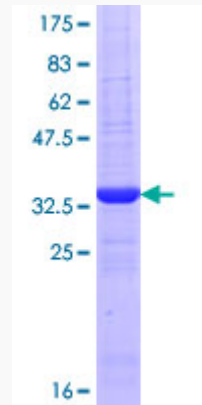
GENE INFORMATION

Gene Name	AANAT aralkylamine N-acetyltransferase [Homo sapiens]
Official Symbol	AANAT
Synonyms	AANAT; aralkylamine N-acetyltransferase; arylalkylamine N acetyltransferase; serotonin N-acetyltransferase; serotonin N acetyltransferase; SNAT; serotonin acetylase; arylalkylamine N-acetyltransferase; DSPS;
Gene ID	15
mRNA Refseq	NM_001088
Protein Refseq	NP_001079
MIM	600950
UniProt ID	Q16613

 Tel: 1-631-559-9269 1-516-512-3133

 Email: info@creative-biomart.com  Fax: 1-631-938-8127

 45-1 Ramsey Road, Shirley, NY 11967, USA



12.5% SDS-PAGE Stained with Coomassie Blue.

 Tel: 1-631-559-9269 1-516-512-3133

 Email: info@creative-biomart.com  Fax: 1-631-938-8127

 45-1 Ramsey Road, Shirley, NY 11967, USA