

Recombinant Human AAPLN protein, GST-tagged

Cat. No. AAPLN-505H Lot. No. (See product label)

SPECIFICATION

Product Overview	Human AAPLN full-length ORF (AAH21104.1, 1 a.a. ~ 122 a.a.) recombinant protein with GST-tag at N-terminal.
Species	Human
Source	Wheat Germ
Description	This gene encodes a peptide that functions as an endogenous ligand for the G-protein coupled apelin receptor. The encoded preproprotein is proteolytically processed into biologically active C-terminal peptide fragments. These peptide fragments activate different tissue specific signaling pathways that regulate diverse biological functions including fluid homeostasis, cardiovascular function and insulin secretion. This protein also functions as a coreceptor for the human immunodeficiency virus 1. [provided by RefSeq, Feb 2016]
Molecular Mass	39.16 kDa
AA Sequence	MSATWCSPGQGMGQGPGRVGGNSAASGPASPIRDPCLSEAGLKGPPSAHPRR LCLLHRLVCFSGGLTSQLSPRTCCSHQWAQLFSPACFPQWRAPGCSLDDSRSLTR IRPVHLPGPSLD
Applications	Enzyme-linked Immunoabsorbent Assay; Western Blot (Recombinant protein); Antibody Production; Protein Array
Notes	Best use within three months from the date of receipt of this protein.

 Tel: 1-631-559-9269 1-516-512-3133

 Email: info@creative-biomart.com  Fax: 1-631-938-8127

 45-1 Ramsey Road, Shirley, NY 11967, USA

Storage Store at -80 centigrade. Aliquot to avoid repeated freezing and thawing.

Storage Buffer 50 mM Tris-HCl, 10 mM reduced Glutathione, pH=8.0 in the elution buffer.

GENE INFORMATION

Gene Name [APLN apelin \[Homo sapiens \]](#)

Official Symbol [APLN](#)

Synonyms APLN; apelin; APEL; XNPEP2; AGTRL1 ligand; APJ endogenous ligand; apelin

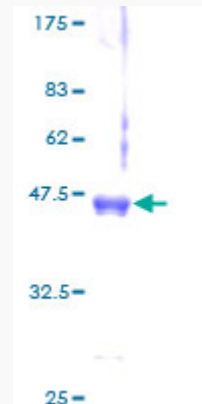
Gene ID [8862](#)

mRNA Refseq [NM_017413](#)

Protein Refseq [NP_059109](#)

MIM [300297](#)

UniProt ID [Q9ULZ1](#)



 Tel: 1-631-559-9269 1-516-512-3133

 Email: info@creative-biomart.com  Fax: 1-631-938-8127

 45-1 Ramsey Road, Shirley, NY 11967, USA



12.5% SDS-PAGE Stained with Coomassie Blue.

 Tel: 1-631-559-9269 1-516-512-3133

 Email: info@creative-biomart.com  Fax: 1-631-938-8127

 45-1 Ramsey Road, Shirley, NY 11967, USA