

## Recombinant Human AASDHPPT Protein, His-tagged

Cat. No. AASDHPPT-480H Lot. No. (See product label)

### SPECIFICATION

<b>Product Overview</b>	Recombinant Human AASDHPPT(Met1~Ser309) fused with His tag at N-terminal was expressed in E. coli.
<b>Species</b>	Human
<b>Source</b>	E.coli
<b>ProteinLength</b>	Met1~Ser309
<b>Description</b>	The protein encoded by this gene is similar to Saccharomyces cerevisiae LYS5, which is required for the activation of the alpha-aminoadipate dehydrogenase in the biosynthetic pathway of lysine. Yeast alpha-aminoadipate dehydrogenase converts alpha-biosynthetic-aminoadipate semialdehyde to alpha-aminoadipate. It has been suggested that defects in the human gene result in pipecolic acidemia.
<b>Form</b>	PBS, pH7.4, containing 0.01% SKL, 1mM DTT, 5% Trehalose and Proclin300.
<b>Molecular Mass</b>	39.5kDa
<b>Endotoxin</b>	<1.0EU per 1ug (determined by the LAL method)
<b>Purity</b>	> 95%
<b>Applications</b>	Positive Control; Immunogen; SDS-PAGE; WB. If bio-activity of the protein is needed, please check active protein

 Tel: 1-631-559-9269 1-516-512-3133

 Email: [info@creative-biomart.com](mailto:info@creative-biomart.com)  Fax: 1-631-938-8127

 45-1 Ramsey Road, Shirley, NY 11967, USA

**Stability** The thermal stability is described by the loss rate. The loss rate was determined by accelerated thermal degradation test, that is, incubate the protein at 37 centigrade for 48h, and no obvious degradation and precipitation were observed. The loss rate is less than 5% within the expiration date under appropriate storage condition.

**Storage** Avoid repeated freeze/thaw cycles. Store at 2-8 centigrade for one month. Aliquot and store at -80 centigrade for 12 months.

**Reconstitution** Reconstitute in PBS or others

## GENE INFORMATION

**Gene Name** [AASDHPPT aminoadipate-semialdehyde dehydrogenase-phosphopantetheinyl transferase \[ Homo sapiens \]](#)

**Official Symbol** [AASDHPPT](#)

**Synonyms** AASDHPPT; aminoadipate-semialdehyde dehydrogenase-phosphopantetheinyl transferase; L-aminoadipate-semialdehyde dehydrogenase-phosphopantetheinyl transferase; AASD PPT; CGI 80; LYS5; LYS5 ortholog; 4-phosphopantetheinyl transferase; alpha-aminoadipic semialdehyde dehydrogenase-phosphopantetheinyl transferase; LYS2; CGI-80; AASD-PPT;

**Gene ID** [60496](#)

**mRNA Refseq** [NM\\_015423](#)

**Protein Refseq** [NP\\_056238](#)

**MIM** [607756](#)

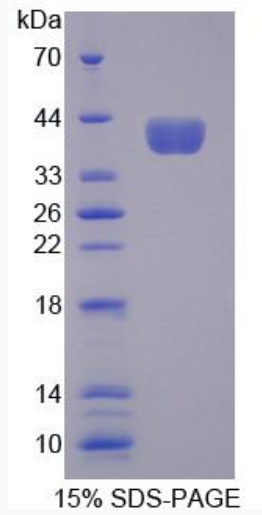
 Tel: 1-631-559-9269 1-516-512-3133

 Email: [info@creative-biomart.com](mailto:info@creative-biomart.com)  Fax: 1-631-938-8127

 45-1 Ramsey Road, Shirley, NY 11967, USA

UniProt ID

Q9NRN7



 Tel: 1-631-559-9269 1-516-512-3133

 Email: [info@creative-biomart.com](mailto:info@creative-biomart.com)  Fax: 1-631-938-8127

 45-1 Ramsey Road, Shirley, NY 11967, USA