

Recombinant Human ABCA2 Protein, GST-tagged

Cat. No. ABCA2-032H Lot. No. (See product label)

SPECIFICATION

Product Overview	Human ABCA2 partial ORF (NP_001597, 76 a.a. - 174 a.a.) recombinant protein with GST-tag at N-terminal.
Species	Human
Source	Wheat Germ
Description	<p>The membrane-associated protein encoded by this gene is a member of the superfamily of ATP-binding cassette (ABC) transporters. ABC proteins transport various molecules across extra- and intracellular membranes. ABC genes are divided into seven distinct subfamilies (ABC1, MDR/TAP, MRP, ALD, OABP, GCN20, White). This protein is a member of the ABC1 subfamily. Members of the ABC1 subfamily comprise the only major ABC subfamily found exclusively in multicellular eukaryotes. This protein is highly expressed in brain tissue and may play a role in macrophage lipid metabolism and neural development. Two transcript variants encoding different isoforms have been found for this gene. [provided by RefSeq, Jul 2008]</p>
Molecular Mass	36.63 kDa
AA Sequence	PDGQRDEFGLFYANSTVTQLLERLDRVVEEGNLFDPARPSLGSELEALRQHLEAL SAGPGTSGSHLDRSTVSSFSLDSVARNPQELWRFLTQNLSPN
Applications	<p>Enzyme-linked Immunoabsorbent Assay</p> <p>Western Blot (Recombinant protein)</p> <p>Antibody Production</p>

 Tel: 1-631-559-9269 1-516-512-3133

 Email: info@creative-biomart.com  Fax: 1-631-938-8127

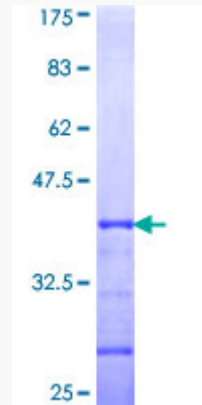
 45-1 Ramsey Road, Shirley, NY 11967, USA

	Protein Array
Notes	Best use within three months from the date of receipt of this protein.
Storage	Store at -80 centigrade. Aliquot to avoid repeated freezing and thawing.
Storage Buffer	50 mM Tris-HCl, 10 mM reduced Glutathione, pH=8.0 in the elution buffer.
GENE INFORMATION	
Gene Name	ABCA2 ATP-binding cassette, sub-family A (ABC1), member 2 [Homo sapiens]
Official Symbol	ABCA2
Synonyms	ABCA2; ATP-binding cassette, sub-family A (ABC1), member 2; ABC2; ATP-binding cassette sub-family A member 2; ATP-binding cassette 2; ATP-binding cassette transporter 2; ATP-binding cassette, sub-family A, member 2; MGC129761;
Gene ID	20
mRNA Refseq	NM_001606
Protein Refseq	NP_001597
MIM	600047
UniProt ID	Q9BZC7

 Tel: 1-631-559-9269 1-516-512-3133

 Email: info@creative-biomart.com  Fax: 1-631-938-8127

 45-1 Ramsey Road, Shirley, NY 11967, USA



12.5% SDS-PAGE Stained with Coomassie Blue.

 Tel: 1-631-559-9269 1-516-512-3133

 Email: info@creative-biomart.com  Fax: 1-631-938-8127

 45-1 Ramsey Road, Shirley, NY 11967, USA