

Recombinant Human ABCA2 protein, His-tagged

Cat. No. ABCA2-13H Lot. No. (See product label)

SPECIFICATION

Product Overview	Recombinant Human ABCA2(Leu2201~Cys2436) fused with His tag at N-terminal was expressed in E. coli.
Species	Human
Source	E.coli
ProteinLength	2201-2436 a.a.
Description	<p>The membrane-associated protein encoded by this gene is a member of the superfamily of ATP-binding cassette (ABC) transporters. ABC proteins transport various molecules across extra- and intracellular membranes. ABC genes are divided into seven distinct subfamilies (ABC1, MDR/TAP, MRP, ALD, OABP, GCN20, White). This protein is a member of the ABC1 subfamily. Members of the ABC1 subfamily comprise the only major ABC subfamily found exclusively in multicellular eukaryotes. This protein is highly expressed in brain tissue and may play a role in macrophage lipid metabolism and neural development. Two transcript variants encoding different isoforms have been found for this gene.</p>
Form	PBS, pH7.4, containing 0.01% SKL, 1mM DTT, 5% Trehalose and Proclin300.
Molecular Mass	30.4kDa
Endotoxin	<1.0EU per 1g (determined by the LAL method)

 Tel: 1-631-559-9269 1-516-512-3133

 Email: info@creative-biomart.com  Fax: 1-631-938-8127

 45-1 Ramsey Road, Shirley, NY 11967, USA

Purity	> 90%
Applications	Positive Control; Immunogen; SDS-PAGE; WB. If bio-activity of the protein is needed, please check active protein.
Storage	Avoid repeated freeze/thaw cycles. Store at 2-8 centigrade for one month. Aliquot and store at -80 centigrade for 12 months.
Reconstitution	Reconstitute in PBS or others.

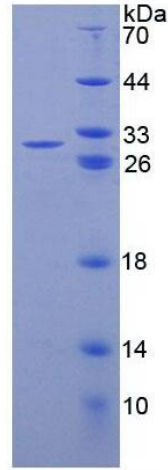
GENE INFORMATION

Gene Name	ABCA2 ATP-binding cassette, sub-family A (ABC1), member 2 [Homo sapiens]
Official Symbol	ABCA2
Synonyms	ABCA2; ATP-binding cassette, sub-family A (ABC1), member 2; ABC2; ATP-binding cassette sub-family A member 2; ATP-binding cassette 2; ATP-binding cassette transporter 2; ATP-binding cassette, sub-family A, member 2; MGC129761;
Gene ID	20
mRNA Refseq	NM_001606
Protein Refseq	NP_001597
MIM	600047
UniProt ID	Q9BZC7

 Tel: 1-631-559-9269 1-516-512-3133

 Email: info@creative-biomart.com  Fax: 1-631-938-8127

 45-1 Ramsey Road, Shirley, NY 11967, USA



15% SDS-PAGE

Tel: 1-631-559-9269 1-516-512-3133

Email: info@creative-biomart.com Fax: 1-631-938-8127

45-1 Ramsey Road, Shirley, NY 11967, USA