

Recombinant Human ABCA6 Protein, GST-Tagged

Cat. No. ABCA6-034H Lot. No. (See product label)

SPECIFICATION

Product Overview	Human ABCA6 full-length ORF (AAH70125.1, 1 a.a. - 185 a.a.) recombinant protein with GST-tag at N-terminal.
Species	Human
Source	Wheat Germ
Description	The membrane-associated protein encoded by this gene is a member of the superfamily of ATP-binding cassette (ABC) transporters. ABC proteins transport various molecules across extra- and intracellular membranes. ABC genes are divided into seven distinct subfamilies (ABC1, MDR/TAP, MRP, ALD, OABP, GCN20, and White). This encoded protein is a member of the ABC1 subfamily. Members of the ABC1 subfamily comprise the only major ABC subfamily found exclusively in multicellular eukaryotes. This gene is clustered among 4 other ABC1 family members on 17q24 and may play a role in macrophage lipid homeostasis. [provided by RefSeq, Jul 2008]
Molecular Mass	47.8 kDa
AA Sequence	MNMKQKSVYQQTKALLCKNFLKKWRMKRESLLEWGLSILLGLCIALFSSSLRNVQFP GMAPQNLGRVDKFNSSSLMVVYTPISNLTQQIMNKTALAPLLKGTSVIGAPNKTHMD EILLENLPYAMGIIFNETFSYKLIFFQGYNSPRWKEDFSGDFPYQISLWNFSCFQHK QRRLGNRDAFNDT
Applications	Enzyme-linked Immunoabsorbent Assay

 Tel: 1-631-559-9269 1-516-512-3133

 Email: info@creative-biomart.com  Fax: 1-631-938-8127

 45-1 Ramsey Road, Shirley, NY 11967, USA

Western Blot (Recombinant protein)
 Antibody Production
 Protein Array

Notes	Best use within three months from the date of receipt of this protein.
Storage	Store at -80 centigrade. Aliquot to avoid repeated freezing and thawing.
Storage Buffer	50 mM Tris-HCl, 10 mM reduced Glutathione, pH=8.0 in the elution buffer.

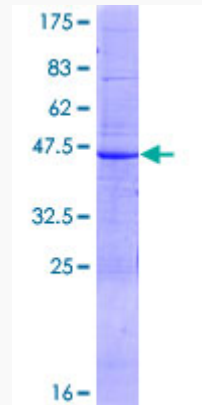
GENE INFORMATION

Gene Name	ABCA6 ATP-binding cassette, sub-family A (ABC1), member 6 [Homo sapiens]
Official Symbol	ABCA6
Synonyms	ABCA6; ATP-binding cassette, sub-family A (ABC1), member 6; ATP-binding cassette sub-family A member 6; EST155051; ABC transporter ABCA6; ATP-binding cassette A6; FLJ43498;
Gene ID	23460
mRNA Refseq	NM_080284
Protein Refseq	NP_525023
MIM	612504
UniProt ID	Q8N139

 Tel: 1-631-559-9269 1-516-512-3133

 Email: info@creative-biomart.com  Fax: 1-631-938-8127

 45-1 Ramsey Road, Shirley, NY 11967, USA



12.5% SDS-PAGE Stained with Coomassie Blue.

 Tel: 1-631-559-9269 1-516-512-3133

 Email: info@creative-biomart.com  Fax: 1-631-938-8127

 45-1 Ramsey Road, Shirley, NY 11967, USA