

Recombinant Human ABCA6 Protein, GST-Tagged

Cat. No. ABCA6-035H Lot. No. (See product label)

SPECIFICATION

Product Overview	Human ABCA6 partial ORF (NP_525023, 53 a.a. - 149 a.a.) recombinant protein with GST-tag at N-terminal.
Species	Human
Source	Wheat Germ
Description	The membrane-associated protein encoded by this gene is a member of the superfamily of ATP-binding cassette (ABC) transporters. ABC proteins transport various molecules across extra- and intracellular membranes. ABC genes are divided into seven distinct subfamilies (ABC1, MDR/TAP, MRP, ALD, OABP, GCN20, and White). This encoded protein is a member of the ABC1 subfamily. Members of the ABC1 subfamily comprise the only major ABC subfamily found exclusively in multicellular eukaryotes. This gene is clustered among 4 other ABC1 family members on 17q24 and may play a role in macrophage lipid homeostasis. [provided by RefSeq, Jul 2008]
Molecular Mass	36.41 kDa
AA Sequence	NVQFPGMAPQNLGRVDKFNSSSLMVVYTPISNLTQQIMNKTALAPLLKGTSVIGAPN KTHMDEILLENLPYAMGIIIFNETFSYKLIFFQGYNSPLWK
Applications	Enzyme-linked Immunoabsorbent Assay Western Blot (Recombinant protein) Antibody Production

 Tel: 1-631-559-9269 1-516-512-3133

 Email: info@creative-biomart.com  Fax: 1-631-938-8127

 45-1 Ramsey Road, Shirley, NY 11967, USA

Protein Array

Notes	Best use within three months from the date of receipt of this protein.
Storage	Store at -80 centigrade. Aliquot to avoid repeated freezing and thawing.
Storage Buffer	50 mM Tris-HCl, 10 mM reduced Glutathione, pH=8.0 in the elution buffer.

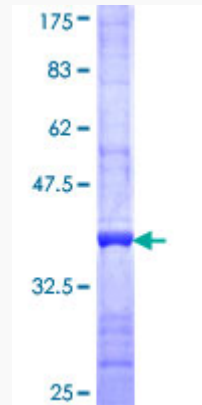
GENE INFORMATION

Gene Name	ABCA6 ATP-binding cassette, sub-family A (ABC1), member 6 [Homo sapiens]
Official Symbol	ABCA6
Synonyms	ABCA6; ATP-binding cassette, sub-family A (ABC1), member 6; ATP-binding cassette sub-family A member 6; EST155051; ABC transporter ABCA6; ATP-binding cassette A6; FLJ43498;
Gene ID	23460
mRNA Refseq	NM_080284
Protein Refseq	NP_525023
MIM	612504
UniProt ID	Q8N139

 Tel: 1-631-559-9269 1-516-512-3133

 Email: info@creative-biomart.com  Fax: 1-631-938-8127

 45-1 Ramsey Road, Shirley, NY 11967, USA



12.5% SDS-PAGE Stained with Coomassie Blue.

 Tel: 1-631-559-9269 1-516-512-3133

 Email: info@creative-biomart.com  Fax: 1-631-938-8127

 45-1 Ramsey Road, Shirley, NY 11967, USA