

Recombinant Human ABCA9 protein, GST-tagged

Cat. No. ABCA9-7644H Lot. No. (See product label)

SPECIFICATION

Product Overview	Recombinant Human ABCA9 protein(52-183 aa), fused with N-terminal GST tag, was expressed in E. coli.
Species	Human
Source	E.coli
ProteinLength	52-183 aa
Tag	N-GST
Form	The purified protein was Lyophilized from sterile PBS (58mM Na ₂ HPO ₄ ,17mM NaH ₂ PO ₄ , 68mM NaCl, pH7.4). 5 % trehalose and 5 % mannitol are added as protectant before lyophilization.
Purity	80%, by SDS-PAGE with Coomassie Brilliant Blue staining.
Storage	Short-term storage: Store at 2-8°C for (1-2 weeks). Long-term storage: Aliquot and store at -20°C to -80°C for up to 3 months, reconstitution with sterile water and addition of an equal volume of glycerol. Avoid repeat freeze-thaw cycles.
Reconstitution	Reconstitute at 0.25 µg/µl in 200 µl sterile water for short-term storage. After reconstitution with sterile water, if glycerol has no effect on subsequent experiments, it is recommended to add an equal volume of glycerol for long-term storage.

 Tel: 1-631-559-9269 1-516-512-3133

 Email: info@creative-biomart.com  Fax: 1-631-938-8127

 45-1 Ramsey Road, Shirley, NY 11967, USA



AA Sequence

HQVHDPQMSSMDLGRVDSFNNTNYVIAFAPESKTTQEIMNKVASAPFLKGRITMG
WPDEKSMDELNLNYSIDAVRVIFTDTFSYHLKFSWGHRIIPMMKEHRDHSACQAVN
EKMKCEGSEFWKEKGFVAFQA

GENE INFORMATION

Gene Name

ABCA9 ATP-binding cassette, sub-family A (ABC1), member 9 [Homo sapiens]

Official Symbol

ABCA9

Synonyms

ABCA9; ATP-binding cassette, sub-family A (ABC1), member 9; ATP-binding cassette sub-family A member 9; EST640918; ATP-binding cassette A9; MGC75415; DKFZp686F2450;

Gene ID

10350

mRNA Refseq

NM_080283

Protein Refseq

NP_525022

MIM

612507

UniProt ID

Q8IUA7

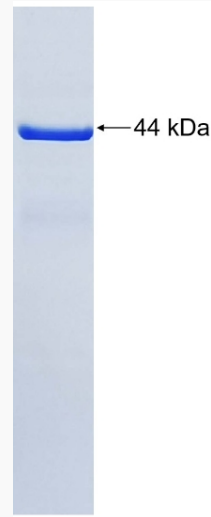
Tel: 1-631-559-9269 1-516-512-3133

Email: info@creative-biomart.com Fax: 1-631-938-8127

45-1 Ramsey Road, Shirley, NY 11967, USA



SDS-PAGE



Tel: 1-631-559-9269 1-516-512-3133

Email: info@creative-biomart.com Fax: 1-631-938-8127

45-1 Ramsey Road, Shirley, NY 11967, USA