

## Recombinant Human ABCB1 Protein (Phe394-Val672), N-GST tagged

Cat. No. ABCB1-1360H Lot. No. (See product label)

### SPECIFICATION

|                         |   |
|-------------------------|---|
| <b>Product Overview</b> | Recombinant Human CD243/ABCB1 (Phe394-Val672) fused with the N-GST tag was expressed in E. coli.  |
| <b>Species</b>          | Human   |
| <b>Source</b>           | E.coli  |
| <b>ProteinLength</b>    | Phe394-Val672   |
| <b>Form</b>             | Lyophilized powder/frozen liquid  |
| <b>Molecular Mass</b>   | 57.73 kDa   |
| <b>Purity</b>           | >90% as determined by SDS-PAGE.   |
| <b>Notes</b>            | For research use only.  |
| <b>Storage</b>          | Use a manual defrost freezer and avoid repeated freeze thaw cycles.<br>Store at 2 to 8 centigrade for one week.<br>Store at -20 to -80 centigrade for twelve months from the date of receipt. |
| <b>Storage Buffer</b>   | 0.01M PBS, pH 7.4, 0.02% NLS  |
| <b>Reconstitution</b>   | Reconstitute in sterile water for a stock solution.   |

 Tel: 1-631-559-9269 1-516-512-3133

 Email: [info@creative-biomart.com](mailto:info@creative-biomart.com)  Fax: 1-631-938-8127

 45-1 Ramsey Road, Shirley, NY 11967, USA

**Shipping** They are shipped out with dry ice/blue ice unless customers require otherwise.

## GENE INFORMATION

**Gene Name** ABCB1 ATP-binding cassette, sub-family B (MDR/TAP), member 1 [ Homo sapiens (human) ]

**Official Symbol** ABCB1

**Synonyms** ABCB1; ATP-binding cassette, sub-family B (MDR/TAP), member 1; CLCS, colchicin sensitivity, MDR1, PGY1; multidrug resistance protein 1; ABC20; CD243; GP170; P gp; P-glycoprotein 1; colchicin sensitivity; doxorubicin resistance; CLCS; MDR1; P-GP; PGY1

**Gene ID** 5243

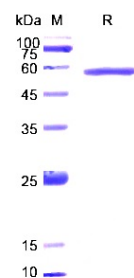
**mRNA Refseq** NM\_000927

**Protein Refseq** NP\_000918

**MIM** 171050

**UniProt ID** P08183

### SDS-PAGE



Tel: 1-631-559-9269 1-516-512-3133

Email: [info@creative-biomart.com](mailto:info@creative-biomart.com) Fax: 1-631-938-8127

45-1 Ramsey Road, Shirley, NY 11967, USA