

## Recombinant Human ABCB1 protein, His-tagged

Cat. No. ABCB1-5275H Lot. No. (See product label)

### SPECIFICATION

|                         |   |
|-------------------------|---|
| <b>Product Overview</b> | Recombinant Human ABCB1 protein(P08183)(236-297aa), fused to N-terminal His tag, was expressed in E. coli.  |
| <b>Species</b>          | Human   |
| <b>Source</b>           | E.coli  |
| <b>ProteinLength</b>    | 236-297aa   |
| <b>Form</b>             | If the delivery form is liquid, the default storage buffer is Tris/PBS-based buffer, 5%-50% glycerol.<br>If the delivery form is lyophilized powder, the buffer before lyophilization is Tris/PBS-based buffer, 6% Trehalose, pH 8.0.                         |
| <b>Molecular Mass</b>   | 10.8 kDa  |
| <b>Purity</b>           | Greater than 90% as determined by SDS-PAGE.   |
| <b>Storage</b>          | Store at -20°C/-80°C upon receipt, aliquoting is necessary for multiple use. Avoid repeated freeze-thaw cycles.   |
| <b>Reconstitution</b>   | Please reconstitute protein in deionized sterile water to a concentration of 0.1-1.0 mg/mL. We recommend to add 5-50% of glycerol (final concentration) and aliquot for long-term storage at -20°C/-80°C. Our default final concentration of glycerol is 50%. |

 Tel: 1-631-559-9269 1-516-512-3133

 Email: [info@creative-biomart.com](mailto:info@creative-biomart.com)  Fax: 1-631-938-8127

 45-1 Ramsey Road, Shirley, NY 11967, USA

## GENE INFORMATION

**Gene Name** ABCB1 ATP-binding cassette, sub-family B (MDR/TAP), member 1 [ Homo sapiens ]

**Official Symbol** ABCB1

**Synonyms** ABCB1; ATP-binding cassette, sub-family B (MDR/TAP), member 1; CLCS, colchicin sensitivity , MDR1, PGY1; multidrug resistance protein 1; ABC20; CD243; GP170; P gp; P-glycoprotein 1; colchicin sensitivity; doxorubicin resistance; CLCS; MDR1; P-GP; PGY1;

**Gene ID** 5243

**mRNA Refseq** NM\_000927

**Protein Refseq** NP\_000918

**MIM** 171050

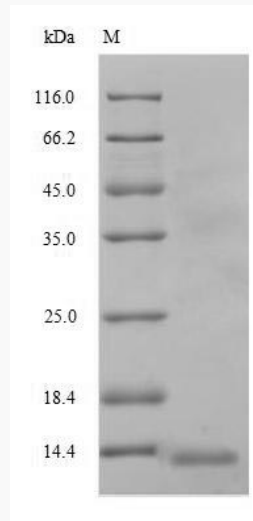
**UniProt ID** P08183

 Tel: 1-631-559-9269 1-516-512-3133

 Email: [info@creative-biomart.com](mailto:info@creative-biomart.com)  Fax: 1-631-938-8127

 45-1 Ramsey Road, Shirley, NY 11967, USA

**SDS-PAGE**



 Tel: 1-631-559-9269 1-516-512-3133

 Email: [info@creative-biomart.com](mailto:info@creative-biomart.com)  Fax: 1-631-938-8127

 45-1 Ramsey Road, Shirley, NY 11967, USA