

Recombinant Human ABCB8 protein, His-tagged

Cat. No. ABCB8-3533H Lot. No. (See product label)

SPECIFICATION

Product Overview	Recombinant Human ABCB8 protein(403-596 aa), fused with N-terminal His tag, was expressed in E. coli.
Species	Human
Source	E.coli
ProteinLength	403-596 aa
Tag	N-His
Form	The purified protein was Lyophilized from sterile PBS (58mM Na ₂ HPO ₄ , 17mM NaH ₂ PO ₄ , 68mM NaCl, pH7.4). 5 % trehalose and 5 % mannitol are added as protectant before lyophilization.
Purity	85%, by SDS-PAGE with Coomassie Brilliant Blue staining.
Storage	Short-term storage: Store at 2-8°C for (1-2 weeks). Long-term storage: Aliquot and store at -20°C to -80°C for up to 3 months, reconstitution with sterile water and addition of an equal volume of glycerol. Avoid repeat freeze-thaw cycles.
Reconstitution	Reconstitute at 0.25 µg/µl in 200 µl sterile water for short-term storage. After reconstitution with sterile water, if glycerol has no effect on subsequent experiments, it is recommended to add an equal volume of glycerol for long-term storage.

 Tel: 1-631-559-9269 1-516-512-3133

 Email: info@creative-biomart.com  Fax: 1-631-938-8127

 45-1 Ramsey Road, Shirley, NY 11967, USA

AA Sequence

TVQRSMANLSVLFQVVRGLSAGARVFEYMALNPCIPLSGGCCVPKEQLRGSVTFQ
 NVCFSYPCRPGFEVLKDFTLTLPPGKIVALVGQSGGGKTTVASLLERFYDPTAGVVM
 LDGRDLRTLDP SWLRGQVVG FISISQEPVLF GTTIMENIRFGKLEASDEEVYTAAREAN
 AHEFITSFPEGYNTVVGERTTLS

GENE INFORMATION

Gene Name [ABCB8 ATP-binding cassette, sub-family B \(MDR/TAP\), member 8 \[Homo sapiens \]](#)

Official Symbol [ABCB8](#)

Synonyms

ABCB8; ATP-binding cassette, sub-family B (MDR/TAP), member 8; ATP-binding cassette sub-family B member 8, mitochondrial; EST328128; M ABC1; MABC1; mitochondrial ABC protein; mitochondrial ATP-binding cassette 1; M-ABC1;

Gene ID [11194](#)

mRNA Refseq [NM_007188](#)

Protein Refseq [NP_009119](#)

MIM [605464](#)

UniProt ID [Q9NUT2](#)

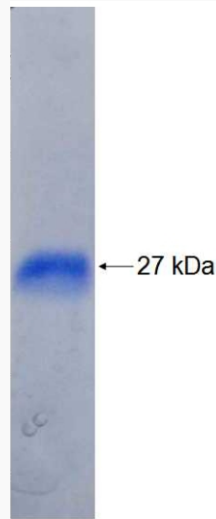
 Tel: 1-631-559-9269 1-516-512-3133

 Email: info@creative-biomart.com  Fax: 1-631-938-8127

 45-1 Ramsey Road, Shirley, NY 11967, USA



SDS-PAGE



Tel: 1-631-559-9269 1-516-512-3133

Email: info@creative-biomart.com Fax: 1-631-938-8127

45-1 Ramsey Road, Shirley, NY 11967, USA