

## Recombinant Human ABCC1 Protein, GST-Tagged

Cat. No. ABCC1-042H Lot. No. (See product label)

### SPECIFICATION

<b>Product Overview</b>	Human ABCC1 partial ORF ( NP_004987, 816 a.a. - 915 a.a.) recombinant protein with GST-tag at N-terminal.
<b>Species</b>	Human
<b>Source</b>	Wheat Germ
<b>Description</b>	<p>The protein encoded by this gene is a member of the superfamily of ATP-binding cassette (ABC) transporters. ABC proteins transport various molecules across extra- and intra-cellular membranes. ABC genes are divided into seven distinct subfamilies (ABC1, MDR/TAP, MRP, ALD, OABP, GCN20, White). This full transporter is a member of the MRP subfamily which is involved in multi-drug resistance. This protein functions as a multispecific organic anion transporter, with oxidized glutathione, cysteinyl leukotrienes, and activated aflatoxin B1 as substrates. This protein also transports glucuronides and sulfate conjugates of steroid hormones and bile salts. Alternatively spliced variants of this gene have been described but their full-length nature is unknown. [provided by RefSeq, Apr 2012]</p>
<b>Molecular Mass</b>	36.74 kDa
<b>AA Sequence</b>	MLKNKTRILVTHSMSYLPQVDVIIIVMSGGKISEMGSYQELLARDGAFAEFLRTYASTE QEQDAEENGVTGVSGPGKEAKQMENGMLVTDSAGKQLQRQLS
<b>Applications</b>	Enzyme-linked Immunoabsorbent Assay Western Blot (Recombinant protein)

 Tel: 1-631-559-9269 1-516-512-3133

 Email: [info@creative-biomart.com](mailto:info@creative-biomart.com)  Fax: 1-631-938-8127

 45-1 Ramsey Road, Shirley, NY 11967, USA

	Antibody Production Protein Array
<b>Notes</b>	Best use within three months from the date of receipt of this protein.
<b>Storage</b>	Store at -80 centigrade. Aliquot to avoid repeated freezing and thawing.
<b>Storage Buffer</b>	50 mM Tris-HCl, 10 mM reduced Glutathione, pH=8.0 in the elution buffer.
<b>GENE INFORMATION</b>	
<b>Gene Name</b>	ABCC1 ATP-binding cassette, sub-family C (CFTR/MRP), member 1 [ Homo sapiens ]
<b>Official Symbol</b>	ABCC1
<b>Synonyms</b>	ABCC1; ATP-binding cassette, sub-family C (CFTR/MRP), member 1; MRP, MRP1, multidrug resistance associated protein 1; multidrug resistance-associated protein 1; GS X; LTC4 transporter; leukotriene C(4) transporter; ATP-binding cassette transporter variant ABCC1delta-ex13; ATP-binding cassette transporter variant ABCC1delta-ex25; ATP-binding cassette transporter variant ABCC1delta-ex13and 14; ATP-binding cassette transporter variant ABCC1delta-ex25& 26; MRP; ABCC; GS-X; MRP1; ABC29; DKFZp781G125; DKFZp686N04233;
<b>Gene ID</b>	4363
<b>mRNA Refseq</b>	NM_004996
<b>Protein Refseq</b>	NP_004987
<b>MIM</b>	158343

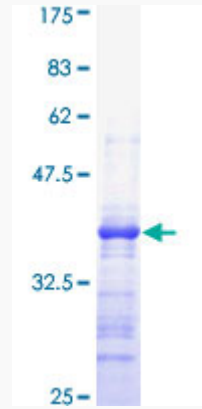
 Tel: 1-631-559-9269 1-516-512-3133

 Email: [info@creative-biomart.com](mailto:info@creative-biomart.com)  Fax: 1-631-938-8127

 45-1 Ramsey Road, Shirley, NY 11967, USA

UniProt ID

P33527



12.5% SDS-PAGE Stained with Coomassie Blue.

 Tel: 1-631-559-9269 1-516-512-3133

 Email: [info@creative-biomart.com](mailto:info@creative-biomart.com)  Fax: 1-631-938-8127

 45-1 Ramsey Road, Shirley, NY 11967, USA