

Recombinant Human ABCC1 Protein (1248-1531 aa), His-tagged

Cat. No. ABCC1-2325H Lot. No. (See product label)

SPECIFICATION

Product Overview	Recombinant Human ABCC1 Protein (1248-1531 aa) is produced by E. coli expression system. This protein is fused with a 6xHis tag at the N-terminal. Research Area: Signal Transduction. Protein Description: Partial.
Species	Human
Source	E.coli
ProteinLength	1248-1531 aa
Description	Mediates export of organic anions and drugs from the cytoplasm. Mediates ATP-dependent transport of glutathione and glutathione conjugates, leukotriene C4, estradiol-17-beta-o-glucuronide, methotrexate, antiviral drugs and other xenobiotics. Confers resistance to anticancer drugs. Hydrolyzes ATP with low efficiency.
Form	Tris-based buffer,50% glycerol
Molecular Mass	35.9 kDa
AA Sequence	VRMSSEMETNIVAVERLKEYSETEKEAPWQIQETAPPSSWPQVGRVEFRNYCLRYR EDLDFVLRHINVTINGGKVGIVGRTGAGKSSLTLGLFRINESAEGEIIIDGINIAKIGLH DLRFKITIIPQDPVLFSGSLRMNLDPFSQYSDEEVWTSLELAHLKDFVSALPDKLDHE CAEGGENLSVGQRQLVCLARALLRKTILVLDEATAAVDLETDDLIQSTIRTQFEDCT VLTIAHRLNTIMDYTRVIVLDKGEIQEYGAPSDLLQQRGLFY SMA kDaGLV

 Tel: 1-631-559-9269 1-516-512-3133

 Email: info@creative-biomart.com  Fax: 1-631-938-8127

 45-1 Ramsey Road, Shirley, NY 11967, USA

Purity	> 90% as determined by SDS-PAGE.
Notes	Repeated freezing and thawing is not recommended. Store working aliquots at 4 centigrade for up to one week.
Storage	The shelf life is related to many factors, storage state, buffer ingredients, storage temperature and the stability of the protein itself. Generally, the shelf life of liquid form is 6 months at -20 centigrade/-80 centigrade. The shelf life of lyophilized form is 12 months at -20 centigrade/-80 centigrade.
Concentration	A hardcopy of COA will be sent along with the products. Please refer to it for detailed information.

GENE INFORMATION

Gene Name	ABCC1 ATP-binding cassette, sub-family C (CFTR/MRP), member 1 [Homo sapiens]
Official Symbol	ABCC1
Synonyms	ABCC1; GS X; LTC4 transporter; 26; MRP; ABCC; GS-X; MRP1; ABC29; DKFZp781G125; DKFZp686N04233;
Gene ID	4363
mRNA Refseq	NM_004996
Protein Refseq	NP_004987
MIM	158343

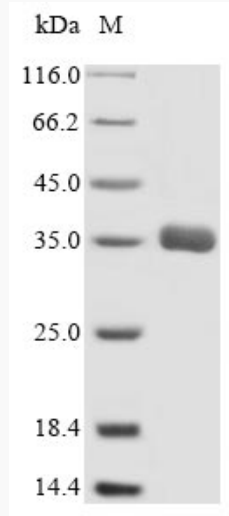
 Tel: 1-631-559-9269 1-516-512-3133

 Email: info@creative-biomart.com  Fax: 1-631-938-8127

 45-1 Ramsey Road, Shirley, NY 11967, USA

UniProt ID

P33527



(Tris-Glycine gel) Discontinuous SDS-PAGE (reduced) with 5% enrichment gel and 15% separation gel.

Tel: 1-631-559-9269 1-516-512-3133

Email: info@creative-biomart.com Fax: 1-631-938-8127

45-1 Ramsey Road, Shirley, NY 11967, USA