

Recombinant Human ABCC13 Protein, GST-Tagged

Cat. No. ABCC13-046H **Lot. No.** (See product label)

SPECIFICATION

Product Overview	Human ABCC13 full-length ORF (ENSP00000345983, 1 a.a. - 169 a.a.) recombinant protein with GST-tag at N-terminal.
Species	Human
Source	Wheat Germ
Description	This gene is a member of the superfamily of genes encoding ATP-binding cassette (ABC) transporters. ABC proteins transport various molecules across extra- and intra-cellular membranes. ABC genes are divided into seven distinct subfamilies (ABC1, MDR/TAP, MRP, ALD, OABP, GCN20, and White). This family member is part of the MRP subfamily, which is involved in multi-drug resistance, but the human locus is now thought to be a pseudogene incapable of encoding a functional ABC protein. Alternative splicing results in multiple transcript variants; however, not all variants have been fully described. [provided by RefSeq, Jul 2008]
Molecular Mass	45.9 kDa
AA Sequence	MLSSTQNAGGSYQRVRGALDTQKCSPEKSASFFSKVTYSWFSRVITLGYKRPLERE DLFELKESDSFCTACPIFEKQWRKEVLRNQRQKVKVSCYKEAHIKKPSLLYALWNT FKSILIQVALFKVFADILSFTSPLIMNYTRKVNYLMGLPCENQKITSYSQASGRDS
Applications	Enzyme-linked Immunoabsorbent Assay Western Blot (Recombinant protein) Antibody Production

 Tel: 1-631-559-9269 1-516-512-3133

 Email: info@creative-biomart.com  Fax: 1-631-938-8127

 45-1 Ramsey Road, Shirley, NY 11967, USA

	Protein Array
Notes	Best use within three months from the date of receipt of this protein.
Storage	Store at -80 centigrade. Aliquot to avoid repeated freezing and thawing.
Storage Buffer	50 mM Tris-HCl, 10 mM reduced Glutathione, pH=8.0 in the elution buffer.

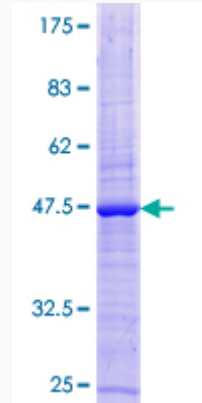
GENE INFORMATION

Gene Name	ABCC13 ATP-binding cassette, sub-family C (CFTR/MRP), member 13, pseudogene [Homo sapiens]
Official Symbol	ABCC13
Synonyms	ABCC13; ATP-binding cassette, sub-family C (CFTR/MRP), member 13, pseudogene; ATP binding cassette, sub family C (CFTR/MRP), member 13; ATP-binding cassette protein C13; C21orf73; PRED6;
Gene ID	150000
mRNA Refseq	NM_138726
MIM	608835
UniProt ID	Q9NSE7

 Tel: 1-631-559-9269 1-516-512-3133

 Email: info@creative-biomart.com  Fax: 1-631-938-8127

 45-1 Ramsey Road, Shirley, NY 11967, USA



12.5% SDS-PAGE Stained with Coomassie Blue.

 Tel: 1-631-559-9269 1-516-512-3133

 Email: info@creative-biomart.com  Fax: 1-631-938-8127

 45-1 Ramsey Road, Shirley, NY 11967, USA