

Recombinant Human ABCC4 Protein (Ile1041-Gln1274), N-His-tagged

Cat. No. ABCC4-0492H Lot. No. (See product label)

SPECIFICATION

Product Overview	Recombinant human ABCC4 (Ile1041-Gln1274) was fused with the N-His tag and was expressed in E. coli.
Species	Human
Source	E.coli
ProteinLength	Ile1041-Gln1274
Form	Lyophilized powder/frozen liquid
Molecular Mass	28.85 kDa
Purity	>90% as determined by SDS-PAGE
Notes	For research use only.
Storage	Use a manual defrost freezer and avoid repeated freeze thaw cycles. Store at 2 to 8 centigrade for one week. Store at -20 to -80 centigrade for twelve months from the date of receipt.
Storage Buffer	0.01M PBS, pH 7.4, 0.02% NLS
Reconstitution	Reconstitute in sterile water for a stock solution.

 Tel: 1-631-559-9269 1-516-512-3133

 Email: info@creative-biomart.com  Fax: 1-631-938-8127

 45-1 Ramsey Road, Shirley, NY 11967, USA

Shipping They are shipped out with dry ice/blue ice unless customers require otherwise.

GENE INFORMATION

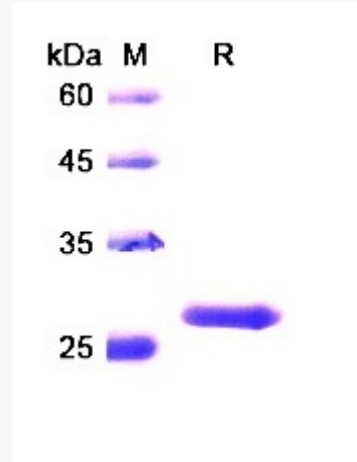
Gene Name	ABCC4 ATP-binding cassette, sub-family C (CFTR/MRP), member 4 [Homo sapiens (human)]
Official Symbol	ABCC4
Synonyms	ABCC4; ATP-binding cassette, sub-family C (CFTR/MRP), member 4; multidrug resistance-associated protein 4; bA464I2.1 (ATP binding cassette; sub family C (CFTR/MRP); member 4); canalicular multispecific organic anion transporter (ABC superfamily); EST170205; MOAT B; MOATB; MRP4; multidrug resistance associated protein 4; multispecific organic anion transporter B; MRP/cMOAT-related ABC transporter; ATP-binding cassette sub-family C member 4; multi-specific organic anion transporter B; bA464I2.1 (ATP-binding cassette, sub-family C (CFTR/MRP), member 4); MOAT-B;
Gene ID	10257
mRNA Refseq	NM_001105515
Protein Refseq	NP_001098985
MIM	605250
UniProt ID	O15439

 Tel: 1-631-559-9269 1-516-512-3133

 Email: info@creative-biomart.com  Fax: 1-631-938-8127

 45-1 Ramsey Road, Shirley, NY 11967, USA

SDS-PAGE



 Tel: 1-631-559-9269 1-516-512-3133

 Email: info@creative-biomart.com  Fax: 1-631-938-8127

 45-1 Ramsey Road, Shirley, NY 11967, USA