

Recombinant Human ABCC6 Protein, GST-Tagged

Cat. No. ABCC6-051H **Lot. No.** (See product label)

SPECIFICATION

Product Overview	Human ABCC6 full-length ORF (NP_001072996.1, 1 a.a. - 99 a.a.) recombinant protein with GST-tag at N-terminal.
Species	Human
Source	Wheat Germ
Description	The protein encoded by this gene is a member of the superfamily of ATP-binding cassette (ABC) transporters. ABC proteins transport various molecules across extra- and intra-cellular membranes. ABC genes are divided into seven distinct subfamilies (ABC1, MDR/TAP, MRP, ALD, OABP, GCN20, White). The encoded protein, a member of the MRP subfamily, is involved in multi-drug resistance. Mutations in this gene cause pseudoxanthoma elasticum. Alternatively spliced transcript variants that encode different proteins have been described for this gene. [provided by RefSeq, Jul 2008]
Molecular Mass	37.2 kDa
AA Sequence	MAAPAEPCAGQG VWNQTEPEPAATSLLSLCFLRTAGVWVPPMYLWVLGPIYLLFIH HHGRGYLRMSPLFKAKMVAAIPGSLEPGNVRGRQGTGWNLVKS
Applications	Enzyme-linked Immunoabsorbent Assay Western Blot (Recombinant protein) Antibody Production Protein Array

 Tel: 1-631-559-9269 1-516-512-3133

 Email: info@creative-biomart.com  Fax: 1-631-938-8127

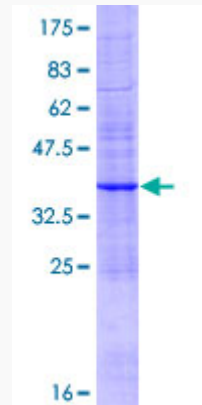
 45-1 Ramsey Road, Shirley, NY 11967, USA

Notes	Best use within three months from the date of receipt of this protein.
Storage	Store at -80 centigrade. Aliquot to avoid repeated freezing and thawing.
Storage Buffer	50 mM Tris-HCl, 10 mM reduced Glutathione, pH=8.0 in the elution buffer.
GENE INFORMATION	
Gene Name	ABCC6 ATP-binding cassette, sub-family C (CFTR/MRP), member 6 [Homo sapiens]
Official Symbol	ABCC6
Synonyms	ABCC6; ATP-binding cassette, sub-family C (CFTR/MRP), member 6; ARA, pseudoxanthoma elasticum , PXE; URG7 protein; multidrug resistance-associated protein 6; EST349056; MLP1; MRP6; URG7; multidrug resistance-associated protein 6; MOAT-E; ATP-binding cassette sub-family C member 6; multi-specific organic anion transporter E; anthracycline resistance-associated protein; ARA; PXE; PXE1; ABC34; GACI2; MOATE;
Gene ID	368
mRNA Refseq	NM_001079528
Protein Refseq	NP_001072996
MIM	603234
UniProt ID	O95255

 Tel: 1-631-559-9269 1-516-512-3133

 Email: info@creative-biomart.com  Fax: 1-631-938-8127

 45-1 Ramsey Road, Shirley, NY 11967, USA



12.5% SDS-PAGE Stained with Coomassie Blue.

 Tel: 1-631-559-9269 1-516-512-3133

 Email: info@creative-biomart.com  Fax: 1-631-938-8127

 45-1 Ramsey Road, Shirley, NY 11967, USA