

## Recombinant Human ABCC6 Protein, His-tagged

Cat. No. ABCC6-633H Lot. No. (See product label)

### SPECIFICATION

<b>Product Overview</b>	Purified recombinant protein of Human ATP-binding cassette, sub-family C (CFTR/MRP), member 6 (ABCC6), transcript variant 2, full length, with N-terminal HIS tag, expressed in E. coli.
<b>Species</b>	Human
<b>Source</b>	E.coli
<b>Description</b>	The protein encoded by this gene is a member of the superfamily of ATP-binding cassette (ABC) transporters. ABC proteins transport various molecules across extra- and intra-cellular membranes. ABC genes are divided into seven distinct subfamilies (ABC1, MDR/TAP, MRP, ALD, OABP, GCN20, White). The encoded protein, a member of the MRP subfamily, is involved in multi-drug resistance. Mutations in this gene cause pseudoxanthoma elasticum. Alternatively spliced transcript variants that encode different proteins have been described for this gene.
<b>Molecular Mass</b>	10.6 kDa
<b>Purity</b>	> 80% as determined by SDS-PAGE and Coomassie blue staining
<b>Stability</b>	Stable for 12 months from the date of receipt of the product under proper storage and handling conditions. Avoid repeated freeze-thaw cycles.
<b>Storage</b>	Store at -80 centigrade.

 Tel: 1-631-559-9269 1-516-512-3133

 Email: [info@creative-biomart.com](mailto:info@creative-biomart.com)  Fax: 1-631-938-8127

 45-1 Ramsey Road, Shirley, NY 11967, USA

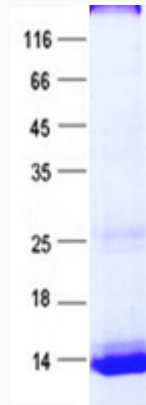
<b>Concentration</b>	>50 µg/mL as determined by microplate BCA method
<b>Storage Buffer</b>	50mM Tris, pH8.0.8M Urea.
<b>Full Length</b>	Full L.
<b>GENE INFORMATION</b>	
<b>Gene Name</b>	ABCC6 ATP binding cassette subfamily C member 6 [ Homo sapiens (human) ]
<b>Official Symbol</b>	ABCC6
<b>Synonyms</b>	ABCC6; ATP binding cassette subfamily C member 6; ARA; PXE; MLP1; MRP6; PXE1; URG7; ABC34; GAC12; MOATE; MOAT-E; EST349056; multidrug resistance-associated protein 6; URG7 protein; ATP-binding cassette, sub-family C (CFTR/MRP), member 6; anthracycline resistance-associated protein; multi-specific organic anion transporter E
<b>Gene ID</b>	368
<b>mRNA Refseq</b>	NM_001079528
<b>Protein Refseq</b>	NP_001072996
<b>MIM</b>	603234
<b>UniProt ID</b>	O95255

 Tel: 1-631-559-9269 1-516-512-3133

 Email: [info@creative-biomart.com](mailto:info@creative-biomart.com)  Fax: 1-631-938-8127

 45-1 Ramsey Road, Shirley, NY 11967, USA

**SDS-PAGE**



 Tel: 1-631-559-9269 1-516-512-3133

 Email: [info@creative-biomart.com](mailto:info@creative-biomart.com)  Fax: 1-631-938-8127

 45-1 Ramsey Road, Shirley, NY 11967, USA