

Recombinant Full Length Human ABCD1 Protein, C-Flag-tagged

Cat. No. ABCD1-320HFL Lot. No. (See product label)

SPECIFICATION

Product Overview

Recombinant Full Length Human ABCD1 Protein, fused to Flag-tag at C-terminus, was expressed in Mammalian cells.

Species

Human

Source

Mammalian Cells

Description

The protein encoded by this gene is a member of the superfamily of ATP-binding cassette (ABC) transporters. ABC proteins transport various molecules across extra- and intra-cellular membranes. ABC genes are divided into seven distinct subfamilies (ABC1, MDR/TAP, MRP, ALD, OABP, GCN20, White). This protein is a member of the ALD subfamily, which is involved in peroxisomal import of fatty acids and/or fatty acyl-CoAs in the organelle. All known peroxisomal ABC transporters are half transporters which require a partner half transporter molecule to form a functional homodimeric or heterodimeric transporter. This peroxisomal membrane protein is likely involved in the peroxisomal transport or catabolism of very long chain fatty acids. Defects in this gene have been identified as the underlying cause of adrenoleukodystrophy, an X-chromosome recessively inherited demyelinating disorder of the nervous system.

Form

25 mM Tris HCl, pH 7.3, 100 mM glycine, 10% glycerol.

Molecular Mass

82.8 kDa

 Tel: 1-631-559-9269 1-516-512-3133

 Email: info@creative-biomart.com  Fax: 1-631-938-8127

 45-1 Ramsey Road, Shirley, NY 11967, USA



AA Sequence

MPVLSRPRPWGNTLKR TAVLLALAA YGAHKVYPLVRQCLAPARGLQAPAGEPTQE
ASGVAAAKAGMNRV FLQRLLWLLRLLFPRVLCRETGLLALHSAALVSRTFLSVYVAR
LDGRLARCIVRKDPRAFGWQLLQWLLI ALPATFVNSAIRYLEGQLALSFRSRLVAHA
YRLYFSQQTYRVS NMDGRLRNP DQSLTEDVVAFAASVAH LYSNLTKPLLDVAVTS
YTLLRAARSRGAGTAWPSA IAGLVVFLTANVLR AFSPKFGELVAEEARRKGELR YM
HSRVVANSEEIAFYGGHEVELALLQRSYQDLASQINLILLERLWYVMLEQFLMKYVW
SASGLLMVAVP IITATGYSESDAEAVKKA ALEKKEEELVSE RTEAFTIARNLLTAAAD
AIERIMSSYKEVTELAGYTARVH EMFQVFEDVQRCHFKRPRELEDAQAGSGTIGRS
GVRVEGPLKIRGQVVDVEQGIICENIPIVTPSGEVVV ASLNIRVEEGMHLLITGPNGC
GKSSLFRILGGLWPTYGGVLYKPPPQRMFYIPQRPYMSVGLSLRDQVIYP DSVEDMQ
RKGYSEQDLEAILDVVHLHHILQREGGWEAMCDWKDVLSGG EKQRIGMARMFYHR
PKYALLDE CTSAVSIDVEGKIFQAAKDAGIALLSITHRPSLWKYHTHLLQFDGEGGW
KFEKLSAARLSL TEEKQRLE
QQLAGIPKMQRRLQELCQILGEAVAPAHVPAPSPQGGGLQGASTTRTRPLEQKLIS
EEDLAANDILDYKDDDDKV

Purity

> 80% as determined by SDS-PAGE and Coomassie blue staining.

Stability

Stable for 12 months from the date of receipt of the product under proper storage and handling conditions. Avoid repeated freeze-thaw cycles.

Storage

Store at -80 centigrade.

Concentration

>50 ug/mL as determined by microplate BCA method.

Preparation

Recombinant protein was captured through anti-DDK affinity column followed by conventional chromatography steps.

Protein Families

Druggable Genome

Tel: 1-631-559-9269 1-516-512-3133

Email: info@creative-biomart.com Fax: 1-631-938-8127

45-1 Ramsey Road, Shirley, NY 11967, USA

Protein Pathways	ABC transporters
-------------------------	------------------

Full Length	Full L.
--------------------	---------

GENE INFORMATION

Gene Name	ABCD1 ATP binding cassette subfamily D member 1 [Homo sapiens (human)]
------------------	--

Official Symbol	ABCD1
------------------------	-------

Synonyms	ALD; AMN; ALDP; ABC42
-----------------	-----------------------

Gene ID	215
----------------	-----

mRNA Refseq	NM_000033.4
--------------------	-------------

Protein Refseq	NP_000024.2
-----------------------	-------------

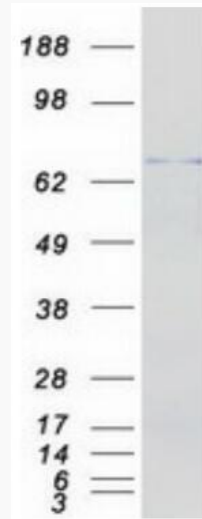
MIM	300371
------------	--------

UniProt ID	P33897
-------------------	--------

 Tel: 1-631-559-9269 1-516-512-3133

 Email: info@creative-biomart.com  Fax: 1-631-938-8127

 45-1 Ramsey Road, Shirley, NY 11967, USA



Coomassie blue staining of purified ABCD1 protein.

 Tel: 1-631-559-9269 1-516-512-3133

 Email: info@creative-biomart.com  Fax: 1-631-938-8127

 45-1 Ramsey Road, Shirley, NY 11967, USA