

Recombinant Human ABCE1 Protein (Ile389-Asn556), N-His-tagged

Cat. No. ABCE1-0260H **Lot. No.** (See product label)

SPECIFICATION

Product Overview	Recombinant human ABCE1 (Ile389-Asn556) was fused with the N-His tag and was expressed in E. coli.
Species	Human
Source	E.coli
ProteinLength	Ile389-Asn556
Form	Lyophilized powder/frozen liquid
Molecular Mass	20.97 kDa
Purity	>90% as determined by SDS-PAGE
Notes	For research use only.
Storage	Use a manual defrost freezer and avoid repeated freeze thaw cycles. Store at 2 to 8 centigrade for one week. Store at -20 to -80 centigrade for twelve months from the date of receipt.
Storage Buffer	0.01M PBS, pH 7.4, 0.02% NLS
Reconstitution	Reconstitute in sterile water for a stock solution.

 Tel: 1-631-559-9269 1-516-512-3133

 Email: info@creative-biomart.com  Fax: 1-631-938-8127

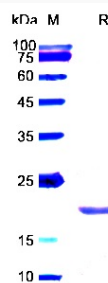
 45-1 Ramsey Road, Shirley, NY 11967, USA

Shipping

They are shipped out with dry ice/blue ice unless customers require otherwise.

GENE INFORMATION

Gene Name	ABCE1 ATP-binding cassette, sub-family E (OABP), member 1 [Homo sapiens (human)]
Official Symbol	ABCE1
Synonyms	RLI; OABP; ABC38; RNS4I; RNASEL1; RNASELI
Gene ID	6059
mRNA Refseq	NM_002940
Protein Refseq	NP_002931
MIM	601213
UniProt ID	P61221

SDS-PAGE


 Tel: 1-631-559-9269 1-516-512-3133

 Email: info@creative-biomart.com  Fax: 1-631-938-8127

 45-1 Ramsey Road, Shirley, NY 11967, USA