

Recombinant Full Length Human ABCE1 Protein, C-Flag-tagged

Cat. No. ABCE1-1570HFL **Lot. No.** (See product label)

SPECIFICATION

Product Overview	Recombinant Full Length Human ABCE1 Protein, fused to Flag-tag at C-terminus, was expressed in Mammalian cells.
Species	Human
Source	Mammalian Cells
Description	The protein encoded by this gene is a member of the superfamily of ATP-binding cassette (ABC) transporters. ABC proteins transport various molecules across extra- and intra-cellular membranes. ABC genes are divided into seven distinct subfamilies (ABC1, MDR/TAP, MRP, ALD, OABP, GCN20, White). This protein is a member of the OABP subfamily. Alternatively referred to as the RNase L inhibitor, this protein functions to block the activity of ribonuclease L. Activation of ribonuclease L leads to inhibition of protein synthesis in the 2-5A/RNase L system, the central pathway for viral interferon action. Two transcript variants encoding the same protein have been found for this gene.
Form	25 mM Tris HCl, pH 7.3, 100 mM glycine, 10% glycerol.
Molecular Mass	67.1 kDa
AA Sequence	MADKLTRIAIVNHDKCKPKKCRQECKKSCPVVRMGKLCIEVTPQSKIAWISETLCIGC GICIKKCPFGAL SIVNLPSNLEKETTHRYCANAFKLHRLPIPRPGEVLGLVGTNGIGK STALKILAGKQKPNLGGYDDPPDW QEILTYFRGSELQNYFTKILEDDLKAIKPKQYVD

 Tel: 1-631-559-9269 1-516-512-3133

 Email: info@creative-biomart.com  Fax: 1-631-938-8127

 45-1 Ramsey Road, Shirley, NY 11967, USA

QIPKAAKGTVGSILDRKDETKTQAIVCQQDLTHLK ERNVEDLSGGELQRFACAVVC
 IQKADIFMFDEPSSYLDVKQRLKAAITIRSLINPDRYIIVVEHDLVLD YLSDFICCLYG
 VPSAYGVVTMPFSVREGINIFLDGYVPTENLRFRDASLVFKVAETANEEVKKMCMY
 KY PGMKKKMGFEFELAIVAGEFTDSEIMVMLGENGTGKTTFFIRMLAGRLKPDEGGEV
 PVLNVSYPKQKISPKS TGSVRQLLHEKIRDAYTHPQFVTDVMKPLQIENIIDQEVQTL
 SGGELQRVALALCLGKPADVYLIDEPSA YLDSEQRLMAARVVKRFILHAKKTAFVVE
 HDFIMATYLADRIVFDGVPKNTVANSPTLLAGMKNKFLS
 QLEITFRRDPNNYRPRINKLNSIKDVEQKKSNGYFFLDDTRTRPLEQKLISEEDLAAN
 DILDYKDDDDKV

Purity > 80% as determined by SDS-PAGE and Coomassie blue staining.

Stability Stable for 12 months from the date of receipt of the product under proper storage and handling conditions. Avoid repeated freeze-thaw cycles.

Storage Store at -80 centigrade.

Concentration >50 ug/mL as determined by microplate BCA method.

Preparation Recombinant protein was captured through anti-DDK affinity column followed by conventional chromatography steps.

Protein Families Druggable Genome

Full Length Full L.

GENE INFORMATION

Gene Name [ABCE1 ATP binding cassette subfamily E member 1 \[Homo sapiens \(human\) \]](#)

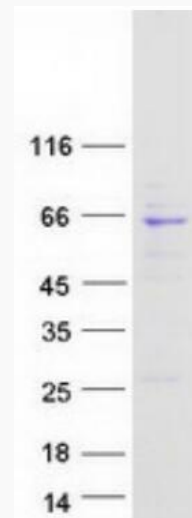
Official Symbol [ABCE1](#)

 Tel: 1-631-559-9269 1-516-512-3133

 Email: info@creative-biomart.com  Fax: 1-631-938-8127

 45-1 Ramsey Road, Shirley, NY 11967, USA

Synonyms	RLI; OABP; RLI1; ABC38; RNS4I; RNASEL1; RNASELI
Gene ID	6059
mRNA Refseq	NM_002940.3
Protein Refseq	NP_002931.2
MIM	601213
UniProt ID	P61221



Coomassie blue staining of purified ABCE1 protein.

 Tel: 1-631-559-9269 1-516-512-3133

 Email: info@creative-biomart.com  Fax: 1-631-938-8127

 45-1 Ramsey Road, Shirley, NY 11967, USA