

# Recombinant Human ABCE1 Protein, Myc/DDK-tagged, C13 and N15-labeled

**Cat. No.** ABCE1-5317H    **Lot. No.** (See product label)

## SPECIFICATION

<b>Product Overview</b>	ABCE1 MS Standard C13 and N15-labeled recombinant protein (NP_002931) with a C-terminal MYC/DDK tag, was expressed in HEK293 cells.
<b>Species</b>	Human
<b>Source</b>	HEK293
<b>Description</b>	The protein encoded by this gene is a member of the superfamily of ATP-binding cassette (ABC) transporters. ABC proteins transport various molecules across extra- and intra-cellular membranes. ABC genes are divided into seven distinct subfamilies (ABC1, MDR/TAP, MRP, ALD, OABP, GCN20, White). This protein is a member of the OABP subfamily. Alternatively referred to as the RNase L inhibitor, this protein functions to block the activity of ribonuclease L. Activation of ribonuclease L leads to inhibition of protein synthesis in the 2-5A/RNase L system, the central pathway for viral interferon action. Two transcript variants encoding the same protein have been found for this gene.
<b>Molecular Mass</b>	67.1 kDa
<b>AA Sequence</b>	MADKLTRIAIVNHDKCKPKKCRQECKKSCPVVRMGKLCIEVTPQSKIAWISETLCIGC GICIKKCPFGALSIVNLPSNLEKETTHRYCANAFKLHRLPIPRPGEVLGLVGTNGIGKS TALKILAGKQKPNLKGKYDDPPDWQEILTYFRGSELQNYFTKILEDDLKAIKPKQYVDQI PKAAKGTVGSILDRKDETKTQAIVCQQLDLTHLKERNVEDLSGGELQRFACAVVCIQ

 Tel: 1-631-559-9269    1-516-512-3133

 Email: [info@creative-biomart.com](mailto:info@creative-biomart.com)     Fax: 1-631-938-8127

 45-1 Ramsey Road, Shirley, NY 11967, USA

KADIFMFDEPSSYLDVKQRLKAAITIRSLINPDRYIIVVEHDLSVLDYLSDFICCLYGVPSAYGVVTMPFSVREGINIFLDGYVPTENLRFRDASLVFKVAETANEEVKKMCMYKYPGMKKKMGFEFELAIVAGEFTDSEIMVMLGENGTGKTTFIRMLAGRLKPDEGGVEPVLNVSYPKQKISPKSTGSRQLLHEKIRDAYTHPQFVTDVMKPLQIENIIDQEVQTLSSGSELQRVALALCLGKPADVYLIDEPSAYLDSEQRLMAARVVKR FILHAKKTAFFVEHDFIMATYLADRIVFDGVPSKNTVANSPTLLAGMNKFLSQLEITFRRDPNNYRPRINKLNSIKDVEQKKS GNYFFLDDTRTRPLEQKLISEEDLAANDILDYKDDDDKV

**Purity** > 80% as determined by SDS-PAGE and Coomassie blue staining

**Stability** Stable for 3 months from receipt of products under proper storage and handling conditions.

**Storage** Store at -80 centigrade. Avoid repeated freeze-thaw cycles.

**Concentration** 50 µg/mL as determined by BCA

**Storage Buffer** 100 mM glycine, 25 mM Tris-HCl, pH 7.3.

## GENE INFORMATION

**Gene Name** [ABCE1 ATP binding cassette subfamily E member 1 \[ Homo sapiens \(human\) \]](#)

**Official Symbol** [ABCE1](#)

**Synonyms** RLI; OABP; ABC38; RNS4I; RNASEL1; RNASELI

**Gene ID** [6059](#)

**mRNA Refseq** [NM\\_002940](#)

 Tel: 1-631-559-9269 1-516-512-3133

 Email: [info@creative-biomart.com](mailto:info@creative-biomart.com)  Fax: 1-631-938-8127

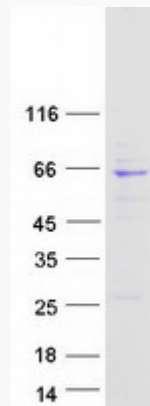
 45-1 Ramsey Road, Shirley, NY 11967, USA

**Protein Refseq** NP\_002931

**MIM** 601213

**UniProt ID** P61221

**SDS-PAGE**



 Tel: 1-631-559-9269 1-516-512-3133

 Email: [info@creative-biomart.com](mailto:info@creative-biomart.com)  Fax: 1-631-938-8127

 45-1 Ramsey Road, Shirley, NY 11967, USA