

Recombinant Human ABCF3 Protein, GST-Tagged

Cat. No. ABCF3-062H Lot. No. (See product label)

SPECIFICATION

Product Overview Human ABCF3 full-length ORF (AAH09253.1, 1 a.a. - 709 a.a.) recombinant protein with GST-tag at N-terminal.

Species Human

Source Wheat Germ

Description ABCF3 (ATP Binding Cassette Subfamily F Member 3) is a Protein Coding gene. Diseases associated with ABCF3 include West Nile Virus. GO annotations related to this gene include ATPase activity. An important paralog of this gene is ABCF1.

Molecular Mass 106.1 kDa

AA Sequence

```

MATCAEILRSEFPEIDGQVFDYVTGVLHSGSADFESVDDLVEAVGELLQEVS GDSKD
DAGIRAVCQRMYNTLRLAEPQSQGNSQVLLDAPIQLSKITENYDCGTKLPGLLKREQ
SSTVNAKKLEKAEARLKAKQEKRSEKDTLKTSNPLVLEEASASQAGSRKESRLESSG
KNKSYDVRIENFDVSFGDRVLLAGADVNLAWGRRYGLVGRNGLGKTTLLKMLATRS
LRVPAHISLLHVEQE VAGDDTPALQSVLES DSVREDLLRRERELTAQIAAGRAEGSE
AAELAEIYAKLEEIEADKAPARASVILAGLGFTPKMQQQPTREFSGGW RMLALARA
LFARPDLLLLDEPTNMLDVRAILWLENYLQ TWPSTILVSHDRNFLNAIATDIIHLHSQ
RLDGYRGDFETFIKSKQERLLNQQREYEAQQYRQHIQVFIDRF RYANANRASQVQS
KLKMLEKLPVKPVDKESEVVMKFPDGF EKFSPPILQLDEVDFYDPKHVIFSRLSVS
ADLESRICVVGENGAGKSTMLKLLGLD LAPVRGIRHAHRNLKIGYFSQHHVEQLDLN
VSAVELLARKFPGRPEEEYRHQLGRYGISGELAMRPLASLSGGQKSRVAF AQMTMP
    
```

Tel: 1-631-559-9269 1-516-512-3133

Email: info@creative-biomart.com Fax: 1-631-938-8127

45-1 Ramsey Road, Shirley, NY 11967, USA

CPNFYILDEPTNHLDMETIEALGRALNNFRGGVILVSHDERFIRLVCRELWVCEGGG
VTRVEGGFDQYRALLQEQRREGFL

Applications
Enzyme-linked Immunoabsorbent Assay
Western Blot (Recombinant protein)
Antibody Production
Protein Array

Notes
Best use within three months from the date of receipt of this protein.

Storage
Store at -80 centigrade. Aliquot to avoid repeated freezing and thawing.

Storage Buffer
50 mM Tris-HCl, 10 mM reduced Glutathione, pH=8.0 in the elution buffer.

GENE INFORMATION

Gene Name
ABCF3 ATP-binding cassette, sub-family F (GCN20), member 3 [Homo sapiens]

Official Symbol
ABCF3

Synonyms
ABCF3; ATP-binding cassette, sub-family F (GCN20), member 3; ATP-binding cassette sub-family F member 3; EST201864; FLJ11198;

Gene ID
55324

mRNA Refseq
NM_018358

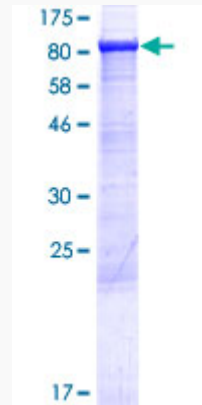
Protein Refseq
NP_060828

UniProt ID
Q9NUQ8

 Tel: 1-631-559-9269 1-516-512-3133

 Email: info@creative-biomart.com  Fax: 1-631-938-8127

 45-1 Ramsey Road, Shirley, NY 11967, USA



12.5% SDS-PAGE Stained with Coomassie Blue.

 Tel: 1-631-559-9269 1-516-512-3133

 Email: info@creative-biomart.com  Fax: 1-631-938-8127

 45-1 Ramsey Road, Shirley, NY 11967, USA