

## Recombinant Human ABCG1 Protein, GST-Tagged

Cat. No. ABCG1-063H Lot. No. (See product label)

### SPECIFICATION

<b>Product Overview</b>	Human ABCG1 full-length ORF ( NP_004906.3, 1 a.a. - 678 a.a.) recombinant protein with GST-tag at N-terminal.
<b>Species</b>	Human
<b>Source</b>	Wheat Germ
<b>Description</b>	The protein encoded by this gene is a member of the superfamily of ATP-binding cassette (ABC) transporters. ABC proteins transport various molecules across extra- and intra-cellular membranes. ABC genes are divided into seven distinct subfamilies (ABC1, MDR/TAP, MRP, ALD, OABP, GCN20, White). This protein is a member of the White subfamily. It is involved in macrophage cholesterol and phospholipids transport, and may regulate cellular lipid homeostasis in other cell types. Six alternative splice variants have been identified. [provided by RefSeq, Jul 2008]
<b>Molecular Mass</b>	102 kDa
<b>AA Sequence</b>	<p>MACLMAAFSVGTAMNASSYSAEMTEPKSVCVSVDEVVSSNMEATETDLLNGHLKK  VDNNLTEAQRFSSSLPRRAAVNIEFRDLSYSVPEGPWWRKKGYKTLKGISGKFNSG  ELVAIMGPSGAGKSTLMNILAGYRETGMKGAVLINGLPRDLRCFRKVSCYIMQDDML  LPHLTVQEAMMVSAHLKLQEKDEGRREMVKEILTALGLLSCANTRTGSLSGGQRKR  LAIALELVNPPVMFFDEPTSGLDSASCFQVVSMLKGLAQQGGRSIICTIHQPSAKLFE  LFDQLYVLSQGQCVYRGKVCNLVPYLRDLGLNCPTYHNPADVFMEVASGEYGDQN  SRLVRVREGMCDSDHKRDLGGDAEVPFLWHRPSEEVKQTKRLKGLRKDSSSM</p>

 Tel: 1-631-559-9269 1-516-512-3133

 Email: [info@creative-biomart.com](mailto:info@creative-biomart.com)  Fax: 1-631-938-8127

 45-1 Ramsey Road, Shirley, NY 11967, USA

EGCHSFSASCLTQFCILFKRTFLSIMRDSVLTHLRITSHIGIGLLIGLLYLGIGNEAKKVL  
 SNSGFLFFSMLFLMFAALMPTVLTFFLEMGVFLREHLNYWYSLKAYYLAKTMADVPF  
 QIMFPVAYCSIVYWMTSQPSDAVRFVLFAALGTMTSLVAQSLGLLIGAASTSLQVATF  
 VGPVTAIPVLLFSGFFVSFDTIPTYLQWMSYISYVRYGFEGVILSIYGLDREDLHCDID  
 ETCHFQKSEAILRELDVENAKLYLDFIVLGIFFISLRLIAFYVRLRYKIRAER

**Applications**  
 Enzyme-linked Immunoabsorbent Assay  
 Western Blot (Recombinant protein)  
 Antibody Production  
 Protein Array

**Notes** Best use within three months from the date of receipt of this protein.

**Storage** Store at -80 centigrade. Aliquot to avoid repeated freezing and thawing.

**Storage Buffer** 50 mM Tris-HCl, 10 mM reduced Glutathione, pH=8.0 in the elution buffer.

## GENE INFORMATION

**Gene Name** [ABCG1 ATP-binding cassette, sub-family G \(WHITE\), member 1 \[ Homo sapiens \]](#)

**Official Symbol** [ABCG1](#)

**Synonyms** ABCG1; ATP-binding cassette, sub-family G (WHITE), member 1; ATP-binding cassette sub-family G member 1; ABC8; ATP binding cassette transporter 8; ABC transporter 8; homolog of Drosophila white; ATP-binding cassette transporter 8; ATP-binding cassette transporter member 1 of subfamily G; white protein homolog (ATP-binding cassette transporter 8); WHITE1; MGC34313;

**Gene ID** [9619](#)

 Tel: 1-631-559-9269 1-516-512-3133

 Email: [info@creative-biomart.com](mailto:info@creative-biomart.com)  Fax: 1-631-938-8127

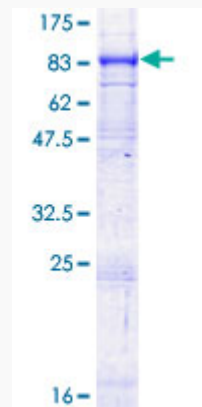
 45-1 Ramsey Road, Shirley, NY 11967, USA

mRNA Refseq NM\_004915

Protein Refseq NP\_004906

MIM 603076

UniProt ID P45844



12.5% SDS-PAGE Stained with Coomassie Blue.

Tel: 1-631-559-9269 1-516-512-3133

Email: [info@creative-biomart.com](mailto:info@creative-biomart.com) Fax: 1-631-938-8127

45-1 Ramsey Road, Shirley, NY 11967, USA