

Recombinant Human ABCG1 Protein, GST-Tagged

Cat. No. ABCG1-064H Lot. No. (See product label)

SPECIFICATION

Product Overview	Human ABCG1 partial ORF (AAH29158, 21 a.a. - 130 a.a.) recombinant protein with GST-tag at N-terminal.
Species	Human
Source	Wheat Germ
Description	The protein encoded by this gene is a member of the superfamily of ATP-binding cassette (ABC) transporters. ABC proteins transport various molecules across extra- and intra-cellular membranes. ABC genes are divided into seven distinct subfamilies (ABC1, MDR/TAP, MRP, ALD, OABP, GCN20, White). This protein is a member of the White subfamily. It is involved in macrophage cholesterol and phospholipids transport, and may regulate cellular lipid homeostasis in other cell types. Six alternative splice variants have been identified. [provided by RefSeq, Jul 2008]
Molecular Mass	37.73 kDa
AA Sequence	AEMTEPKSVCVSVDEVVSSNMEATETDLLNGHLKKVDNNLTEAQRFSSLPRRAAVN IEFRDLSYSVPEGPWWRKKGYKTLLKGISGKFNSGELVAIMGPSGAGKSTLMNI
Applications	Enzyme-linked Immunoabsorbent Assay Western Blot (Recombinant protein) Antibody Production Protein Array

 Tel: 1-631-559-9269 1-516-512-3133

 Email: info@creative-biomart.com  Fax: 1-631-938-8127

 45-1 Ramsey Road, Shirley, NY 11967, USA

Notes	Best use within three months from the date of receipt of this protein.
Storage	Store at -80 centigrade. Aliquot to avoid repeated freezing and thawing.
Storage Buffer	50 mM Tris-HCl, 10 mM reduced Glutathione, pH=8.0 in the elution buffer.

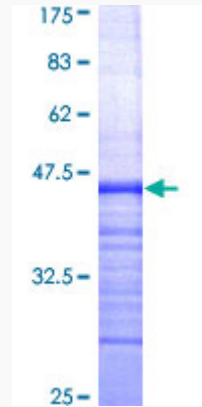
GENE INFORMATION

Gene Name	ABCG1 ATP-binding cassette, sub-family G (WHITE), member 1 [Homo sapiens]
Official Symbol	ABCG1
Synonyms	ABCG1; ATP-binding cassette, sub-family G (WHITE), member 1; ATP-binding cassette sub-family G member 1; ABC8; ATP binding cassette transporter 8; ABC transporter 8; homolog of Drosophila white; ATP-binding cassette transporter 8; ATP-binding cassette transporter member 1 of subfamily G; white protein homolog (ATP-binding cassette transporter 8); WHITE1; MGC34313;
Gene ID	9619
mRNA Refseq	NM_004915
Protein Refseq	NP_004906
MIM	603076
UniProt ID	P45844

 Tel: 1-631-559-9269 1-516-512-3133

 Email: info@creative-biomart.com  Fax: 1-631-938-8127

 45-1 Ramsey Road, Shirley, NY 11967, USA



12.5% SDS-PAGE Stained with Coomassie Blue.

 Tel: 1-631-559-9269 1-516-512-3133

 Email: info@creative-biomart.com  Fax: 1-631-938-8127

 45-1 Ramsey Road, Shirley, NY 11967, USA