

Recombinant Human ABCG1 Protein, Myc/DDK-tagged, C13 and N15-labeled

Cat. No. ABCG1-880H **Lot. No.** (See product label)

SPECIFICATION

Product Overview	ABCG1 MS Standard C13 and N15-labeled recombinant protein (NP_058198) with a C-terminal MYC/DDK tag, was expressed in HEK293 cells.
Species	Human
Source	HEK293
Description	The protein encoded by this gene is a member of the superfamily of ATP-binding cassette (ABC) transporters. ABC proteins transport various molecules across extra- and intra-cellular membranes. ABC genes are divided into seven distinct subfamilies (ABC1, MDR/TAP, MRP, ALD, OABP, GCN20, White). This protein is a member of the White subfamily. It is involved in macrophage cholesterol and phospholipids transport, and may regulate cellular lipid homeostasis in other cell types. Six alternative splice variants have been identified.
Molecular Mass	74 kDa
AA Sequence	<p>MACLMAAFSVGTAMNASSYSAEMTEPKSVCVSVDEVVSSNMEATETDLLNGHLKK VDNNLTEAQRFFSSLPRRAAVNIEFRDLSYSVPEGPWWRKKGYKTLLKGISGKFNSG ELVAIMGPSGAGKSTLMNILAGYRETGMKGAVLINGLPRDLRCFRKVSCYIMQDDML LPHLTVQEAMMVSAHLKLQEKDEGRREMVKEILTALGLLSCANTRTGSLSGGQRKR LAIAELVNNPPVMFFDEPTSGLDSASCFQVVSMLMKGLAQGGRSIICTIHQPSAKLFE LFDQLYVLSQGQCIVYRGKVCNLVPYLRDLGLNCPTYHNPADFVMEVASGEYGDQN</p>

 Tel: 1-631-559-9269 1-516-512-3133

 Email: info@creative-biomart.com  Fax: 1-631-938-8127

 45-1 Ramsey Road, Shirley, NY 11967, USA



SRLVRVREGMCDSDHKRDLGGDAEVPFLWHRPSEEDSSSMEGCHSFSASCLT
 QFCILFKRTFLSIMRDSVLTHLRITSHIGIGLLIGLLYLGIGNEAKKVLNSGFLFFSMLF
 LMFAALMPTVLTFFLEMGVFLREHLNYWYSLKAYYLAKTMADVFPQIMFPVAYCSIV
 YWMTSQPSDAVRFVLFAALGTMSTLVAQSLGLLIGAASTSLQVATFVGPVTAIPVLLF
 SGFFVSFDTIPTYLQWMSYISYVRYGFEGVILSIYGLDREDLHCDIDETCHFQKSEAIL
 RELDVENAKLYLDFIVLGIFFISLRLIAYFVRLRYKIRAERTRTRPLEQKLISEEDLAANDIL
 DYKDDDDKV

Purity > 80% as determined by SDS-PAGE and Coomassie blue staining

Stability Stable for 3 months from receipt of products under proper storage and handling conditions.

Storage Store at -80 centigrade. Avoid repeated freeze-thaw cycles.

Concentration 50 µg/mL as determined by BCA

Storage Buffer 100 mM glycine, 25 mM Tris-HCl, pH 7.3.

GENE INFORMATION

Gene Name [ABCG1 ATP binding cassette subfamily G member 1 \[Homo sapiens \(human\) \]](#)

Official Symbol [ABCG1](#)

Synonyms ABCG1; ATP-binding cassette, sub-family G (WHITE), member 1; ATP-binding cassette sub-family G member 1; ABC8; ATP binding cassette transporter 8; ABC transporter 8; homolog of Drosophila white; ATP-binding cassette transporter 8; ATP-binding cassette transporter member 1 of subfamily G; white protein homolog (ATP-binding cassette transporter 8); WHITE1; MGC34313;

Tel: 1-631-559-9269 1-516-512-3133

Email: info@creative-biomart.com Fax: 1-631-938-8127

45-1 Ramsey Road, Shirley, NY 11967, USA

Gene ID 9619

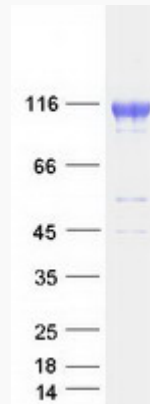
mRNA Refseq NM_016818

Protein Refseq NP_058198

MIM 603076

UniProt ID P45844

SDS-PAGE



Tel: 1-631-559-9269 1-516-512-3133

Email: info@creative-biomart.com Fax: 1-631-938-8127

45-1 Ramsey Road, Shirley, NY 11967, USA