

## Recombinant Human ABCG2 Protein, GST-Tagged

Cat. No. ABCG2-066H Lot. No. (See product label)

### SPECIFICATION

**Product Overview** Human ABCG2 partial ORF ( NP\_004818, 1 a.a. - 110 a.a.) recombinant protein with GST-tag at N-terminal.

**Species** Human

**Source** Wheat Germ

**Description** The membrane-associated protein encoded by this gene is included in the superfamily of ATP-binding cassette (ABC) transporters. ABC proteins transport various molecules across extra- and intra-cellular membranes. ABC genes are divided into seven distinct subfamilies (ABC1, MDR/TAP, MRP, ALD, OABP, GCN20, White). This protein is a member of the White subfamily. Alternatively referred to as a breast cancer resistance protein, this protein functions as a xenobiotic transporter which may play a major role in multi-drug resistance. It likely serves as a cellular defense mechanism in response to mitoxantrone and anthracycline exposure. Significant expression of this protein has been observed in the placenta, which may suggest a potential role for this molecule in placenta tissue. Multiple transcript variants encoding different isoforms have been found for this gene. [provided by RefSeq, Apr 2012]

**Molecular Mass** 37.84 kDa

**AA Sequence** MSSSNVEVFIPVSQGNTNGFPATVSNDLKAFTEGAVLSFHNICYRVKLGKSGFLPCRK  
PVEKEILSNINGIMKPLNAILGPTGGGKSSLLDVLAARKDPSGLSGDVLING

 Tel: 1-631-559-9269 1-516-512-3133

 Email: [info@creative-biomart.com](mailto:info@creative-biomart.com)  Fax: 1-631-938-8127

 45-1 Ramsey Road, Shirley, NY 11967, USA

<b>Applications</b>	<p>Enzyme-linked Immunoabsorbent Assay</p> <p>Western Blot (Recombinant protein)</p> <p>Antibody Production</p> <p>Protein Array</p>
<b>Notes</b>	Best use within three months from the date of receipt of this protein.
<b>Storage</b>	Store at -80 centigrade. Aliquot to avoid repeated freezing and thawing.
<b>Storage Buffer</b>	50 mM Tris-HCl, 10 mM reduced Glutathione, pH=8.0 in the elution buffer.
<b>GENE INFORMATION</b>	
<b>Gene Name</b>	<a href="#">ABCG2 ATP-binding cassette, sub-family G (WHITE), member 2 [ Homo sapiens ]</a>
<b>Official Symbol</b>	<a href="#">ABCG2</a>
<b>Synonyms</b>	<p>ABCG2; ATP-binding cassette, sub-family G (WHITE), member 2; ATP-binding cassette sub-family G member 2; ABCP; BCRP; CD338; EST157481; MXR; ABC transporter; placenta specific MDR protein; breast cancer resistance protein; ATP-binding cassette transporter G2; mitoxantrone resistance-associated protein; placenta-specific ATP-binding cassette transporter; multi drug resistance efflux transport ATP-binding cassette sub-family G (WHITE) member 2; MRX; BMDP; MXR1; ABC15; BCRP1; GOUT1; CDw338; UAQTL1; MGC102821;</p>
<b>Gene ID</b>	<a href="#">9429</a>
<b>mRNA Refseq</b>	<a href="#">NM_001257386</a>
<b>Protein Refseq</b>	<a href="#">NP_001244315</a>

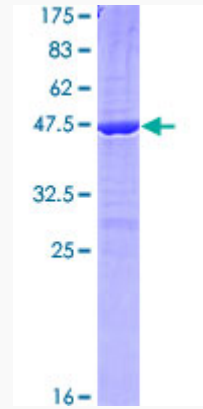
 Tel: 1-631-559-9269 1-516-512-3133

 Email: [info@creative-biomart.com](mailto:info@creative-biomart.com)  Fax: 1-631-938-8127

 45-1 Ramsey Road, Shirley, NY 11967, USA

MIM 603756

UniProt ID Q9UNQ0



12.5% SDS-PAGE Stained with Coomassie Blue.

 Tel: 1-631-559-9269 1-516-512-3133

 Email: [info@creative-biomart.com](mailto:info@creative-biomart.com)  Fax: 1-631-938-8127

 45-1 Ramsey Road, Shirley, NY 11967, USA