

# Recombinant Human ABCG2 Protein (Asn557-His630), N-His tagged

**Cat. No.** ABCG2-1536H    **Lot. No.** (See product label)

## SPECIFICATION

<b>Product Overview</b>	Recombinant Human CD338/ABCG2 (Asn557-His630) fused with the N-His tag was expressed in E. coli.
<b>Species</b>	Human
<b>Source</b>	E.coli
<b>ProteinLength</b>	Asn557-His630
<b>Form</b>	Lyophilized powder/frozen liquid
<b>Molecular Mass</b>	10.72 kDa
<b>Purity</b>	>90% as determined by SDS-PAGE.
<b>Notes</b>	For research use only.
<b>Storage</b>	Use a manual defrost freezer and avoid repeated freeze thaw cycles. Store at 2 to 8 centigrade for one week. Store at -20 to -80 centigrade for twelve months from the date of receipt.
<b>Storage Buffer</b>	0.01M PBS, pH 7.4, 0.02% NLS
<b>Reconstitution</b>	Reconstitute in sterile water for a stock solution.

 Tel: 1-631-559-9269    1-516-512-3133

 Email: [info@creative-biomart.com](mailto:info@creative-biomart.com)     Fax: 1-631-938-8127

 45-1 Ramsey Road, Shirley, NY 11967, USA

**Shipping** They are shipped out with dry ice/blue ice unless customers require otherwise.

## GENE INFORMATION

**Gene Name** ABCG2 ATP-binding cassette, sub-family G (WHITE), member 2 [ Homo sapiens (human) ]

**Official Symbol** ABCG2

**Synonyms** ABCG2; ATP-binding cassette, sub-family G (WHITE), member 2; ATP-binding cassette sub-family G member 2; ABCP; BCRP; CD338; EST157481; MXR; ABC transporter; placenta specific MDR protein; breast cancer resistance protein; ATP-binding cassette transporter G2; mitoxantrone resistance-associated protein; placenta-specific ATP-binding cassette transporter; multi drug resistance efflux transport ATP-binding cassette sub-family G (WHITE) member 2; MRX; BMDP; MXR1; ABC15; BCRP1; GOUT1; CDw338; UAQTL1; MGC102821

**Gene ID** 9429

**mRNA Refseq** NM\_001257386

**Protein Refseq** NP\_001244315

**MIM** 603756

**UniProt ID** Q9UNQ0

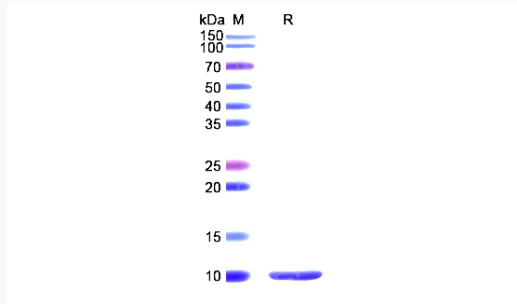
 Tel: 1-631-559-9269 1-516-512-3133

 Email: [info@creative-biomart.com](mailto:info@creative-biomart.com)  Fax: 1-631-938-8127

 45-1 Ramsey Road, Shirley, NY 11967, USA



SDS-PAGE



Tel: 1-631-559-9269 1-516-512-3133

Email: [info@creative-biomart.com](mailto:info@creative-biomart.com) Fax: 1-631-938-8127

45-1 Ramsey Road, Shirley, NY 11967, USA