

## Recombinant Human ABCG2 Protein, C-His-tagged

Cat. No. ABCG2-187H Lot. No. (See product label)

### SPECIFICATION

<b>Product Overview</b>	Recombinant Human ABCG2 Protein with C-His tag was expressed in E. coli.
<b>Species</b>	Human
<b>Source</b>	E.coli
<b>Description</b>	<p>ABCG2 (BCRP1/ABCP/MXR) is a member of the ATP-binding cassette transporter family that functions as ATP-dependent transporters for a wide variety of chemical compounds and are associated with drug-resistance in cancer cells. ABCG2 is a heavily glycosylated transmembrane protein with six transmembrane spanning regions consistent with it functioning as a half-transporter. The ABC family can exist as either full-length transporters or as half-transporters that form functional transporters through homo- or heterodimerization. High expression of ABCG2 was found in placenta as well as cell lines selected for resistance to a number of chemotherapeutic drugs, including mitoxantrone, doxorubicin, topotecan and flavopiridol. In rodents, the highest expression of ABCG2 was found in kidney. ABCG2 expression has also been observed in stem cell populations, particularly in hematopoietic and neuronal stem cells and is downregulated with differentiation.</p>
<b>Molecular Mass</b>	~43 kDa
<b>AA Sequence</b>	<p>SSSNVEVFIPVSQGNTNGFPATASNDLKAFTEGAVLSFHNICYRVKLKSGFLPCRKP  VEKEILSNINGIMKPLNAILGPTGGGKSSLLDVLAAARKDPSGLSGDVLINGAPRPAN  FKCNSGYVVQDDVVMGTLTVRENLQFSAALRLATTMTNHEKNERINRVIQELGLDKV</p>

 Tel: 1-631-559-9269 1-516-512-3133

 Email: [info@creative-biomart.com](mailto:info@creative-biomart.com)  Fax: 1-631-938-8127

 45-1 Ramsey Road, Shirley, NY 11967, USA

ADSKVGTQFIRGVSGGERKRTSIGMELITDPSILFLDEPTTGLDSSTANAVLLLLKRM  
 SKQGRTIIFSIIHQPRYSIFKLFDSLTLASGRMLFHGPAQEALGYFESAGYHCEAYNN  
 PADFFLDIINGDSTAVALNREEDFKATEIIEPSKQDKPLIEKLAEIYVNSSFYKETAEL  
 HQLSGGEKKKKITVFKEISYTTSFCHQLRWVSKRSFKNLLGNPQAS

**Purity**

Transferred into competent cells and the supernatant was purified by NI column affinity chromatography and the purity is > 85% (by SDS-PAGE).

**Notes**

For research use only, not for use in diagnostic procedure.

**Storage**

Store at 4 centigrade short term. Aliquot and store at -20 centigrade long term. Avoid freeze-thaw cycles.

**Concentration**

≥0.5 mg/mL

**Storage Buffer**

PBS, 4M Urea, pH7.4

## GENE INFORMATION

**Gene Name**

ABCG2 ATP-binding cassette, sub-family G (WHITE), member 2 [ Homo sapiens (human) ]

**Official Symbol**

ABCG2

**Synonyms**

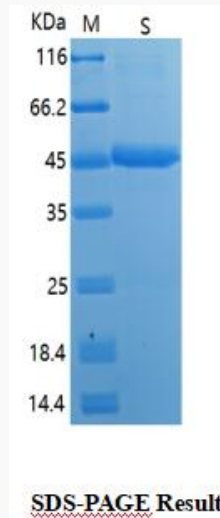
ABCG2; ATP-binding cassette, sub-family G (WHITE), member 2; ATP-binding cassette sub-family G member 2; ABCP; BCRP; CD338; EST157481; MXR; ABC transporter; placenta specific MDR protein; breast cancer resistance protein; ATP-binding cassette transporter G2; mitoxantrone resistance-associated protein; placenta-specific ATP-binding cassette transporter; multi drug resistance efflux transport ATP-binding cassette sub-family G (WHITE) member 2; MRX; BMDP; MXR1; ABC15; BCRP1; GOUT1; CDw338; UAQTL1; MGC102821;

 Tel: 1-631-559-9269 1-516-512-3133

 Email: [info@creative-biomart.com](mailto:info@creative-biomart.com)  Fax: 1-631-938-8127

 45-1 Ramsey Road, Shirley, NY 11967, USA

Gene ID	9429
mRNA Refseq	NM_001257386
Protein Refseq	NP_001244315
MIM	603756
UniProt ID	Q9UNQ0

**SDS-PAGE**

 Tel: 1-631-559-9269 1-516-512-3133

 Email: [info@creative-biomart.com](mailto:info@creative-biomart.com)  Fax: 1-631-938-8127

 45-1 Ramsey Road, Shirley, NY 11967, USA