

Recombinant Human ABCG8 protein, His-tagged

Cat. No. ABCG8-2433H Lot. No. (See product label)

SPECIFICATION

| | |
|-------------------------|--|
| Product Overview | Recombinant Human ABCG8 protein(1-160 aa), fused with N-terminal His tag, was expressed in E. coli. |
| Species | Human |
| Source | E.coli |
| ProteinLength | 1-160 aa |
| Tag | N-His |
| Form | The purified protein was Lyophilized from sterile PBS (58mM Na ₂ HPO ₄ , 17mM NaH ₂ PO ₄ , 68mM NaCl, pH7.4). 5 % trehalose and 5 % mannitol are added as protectant before lyophilization. |
| Purity | 85%, by SDS-PAGE with Coomassie Brilliant Blue staining. |
| Storage | Short-term storage: Store at 2-8°C for (1-2 weeks). Long-term storage: Aliquot and store at -20°C to -80°C for up to 3 months, reconstitution with sterile water and addition of an equal volume of glycerol. Avoid repeat freeze-thaw cycles. |
| Reconstitution | Reconstitute at 0.25 µg/µl in 200 µl sterile water for short-term storage. After reconstitution with sterile water, if glycerol has no effect on subsequent experiments, it is recommended to add an equal volume of glycerol for long-term storage. |

 Tel: 1-631-559-9269 1-516-512-3133

 Email: info@creative-biomart.com  Fax: 1-631-938-8127

 45-1 Ramsey Road, Shirley, NY 11967, USA

AA Sequence MAGKAAEERGLPKGATPQHTSGLQDRLFSSSESDNSLYFTYSGQPNTLEVRDLNYQ
 VDLASQVPWFELAQFKMPWTSPSCQNSCELGIQNLSFKVRSQMLAIIGSSGCGR
 ASLLDVITGRGHGGKIKSGQIWINGQPSSPQLVRKCVAHVRQHNQLLPN

GENE INFORMATION

Gene Name [ABCG8 ATP-binding cassette, sub-family G \(WHITE\), member 8 \[Homo sapiens \]](#)

Official Symbol [ABCG8](#)

Synonyms

ABCG8; ATP-binding cassette, sub-family G (WHITE), member 8; ATP binding cassette, sub family G (WHITE), member 8 (sterolin 2); ATP-binding cassette sub-family G member 8; gallbladder disease 4; GBD4; sterolin 2; sterolin-2; ATP-binding cassette, subfamily G, member 8; STSL; MGC142217;

Gene ID [64241](#)

mRNA Refseq [NM_022437](#)

Protein Refseq [NP_071882](#)

MIM [605460](#)

UniProt ID [Q9H221](#)

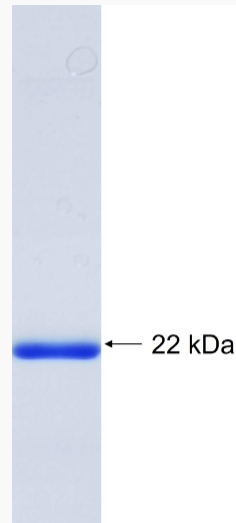
 Tel: 1-631-559-9269 1-516-512-3133

 Email: info@creative-biomart.com  Fax: 1-631-938-8127

 45-1 Ramsey Road, Shirley, NY 11967, USA



SDS-PAGE



Tel: 1-631-559-9269 1-516-512-3133

Email: info@creative-biomart.com Fax: 1-631-938-8127

45-1 Ramsey Road, Shirley, NY 11967, USA