

Recombinant Human ABHD1 Protein, GST-Tagged

Cat. No. ABHD1-070H Lot. No. (See product label)

SPECIFICATION

| | |
|-------------------------|--|
| Product Overview | Human ABHD1 full-length ORF (AAH39576, 1 a.a. - 405 a.a.) recombinant protein with GST-tag at N-terminal. |
| Species | Human |
| Source | Wheat Germ |
| Description | This gene is a member of the AB hydrolase superfamily and encodes a protein with an alpha/beta hydrolase fold. This domain is common to a number of hydrolytic enzymes of widely differing phylogenetic origins and catalytic functions. [provided by RefSeq, Jul 2008] |
| Molecular Mass | 70.07 kDa |
| AA Sequence | <p>MLSSFLSPQNGTWADTFSLLLALAVALYLGYYWACVLQRPRLVAGPQFLAFLEPHC SITTETFYPTLWCFEGRLQSIFQVLLQSQPLVLYQSDILQTPDGGQLLLDWAKQPDS SQDPDPTTQPIVLLLPGITGSSQETYVLHLVNQALRDGYQAVVFNNRGCRCGEELRTH RAFCASNTEDLETVVNHIKHRYQPAPLLAVGISFGGILVLNHLAQARQAAGLVAALT SACWDSFETTRSLETPLNSLLFNQPLTAGLCQLVERNRKVIEKVVDIDFVLQARTIRQ FDERYTSVAFGYQDCVTYYKAASPRTKIDAIRIPVLYLSAADDPFSPVCALPIQAAQH SPYVALLITARGGHIGFLEGLLPWQHWYMSRLLHQYAKAIFQDPEGLPDLRALLPSE DRNS</p> |
| Applications | Enzyme-linked Immunoabsorbent Assay Western Blot (Recombinant protein) |

 Tel: 1-631-559-9269 1-516-512-3133

 Email: info@creative-biomart.com  Fax: 1-631-938-8127

 45-1 Ramsey Road, Shirley, NY 11967, USA

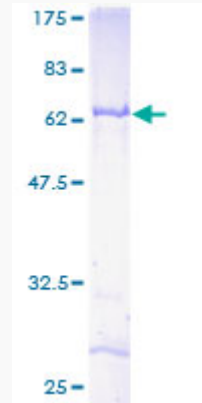


| | |
|-------------------------|--|
| | Antibody Production Protein Array |
| Notes | Best use within three months from the date of receipt of this protein. |
| Storage | Store at -80 centigrade. Aliquot to avoid repeated freezing and thawing. |
| Storage Buffer | 50 mM Tris-HCl, 10 mM reduced Glutathione, pH=8.0 in the elution buffer. |
| GENE INFORMATION | |
| Gene Name | ABHD1 abhydrolase domain containing 1 [Homo sapiens] |
| Official Symbol | ABHD1 |
| Synonyms | ABHD1; abhydrolase domain containing 1; abhydrolase domain-containing protein 1; FLJ36128; LABH1; lung alpha/beta hydrolase 1; |
| Gene ID | 84696 |
| mRNA Refseq | NM_032604 |
| Protein Refseq | NP_115993 |
| MIM | 612195 |
| UniProt ID | Q96SE0 |

Tel: 1-631-559-9269 1-516-512-3133

Email: info@creative-biomart.com Fax: 1-631-938-8127

45-1 Ramsey Road, Shirley, NY 11967, USA



12.5% SDS-PAGE Stained with Coomassie Blue.

 Tel: 1-631-559-9269 1-516-512-3133

 Email: info@creative-biomart.com  Fax: 1-631-938-8127

 45-1 Ramsey Road, Shirley, NY 11967, USA