

## Recombinant Human ABHD10 Protein, GST-Tagged

**Cat. No.** ABHD10-071H    **Lot. No.** (See product label)

### SPECIFICATION

<b>Product Overview</b>	Human ABHD10 full-length ORF ( AAH14516, 1 a.a. - 306 a.a.) recombinant protein with GST-tag at N-terminal.
<b>Species</b>	Human
<b>Source</b>	Wheat Germ
<b>Description</b>	This gene encodes a mitochondrially-localized enzyme that acts in liver cells as a hydrolase. The encoded protein removes glucuronide from mycophenolic acid acyl-glucuronide. There is a pseudogene for this gene on chromosome 6. Alternative splicing results in multiple transcript variants. [provided by RefSeq, Jan 2013]
<b>Molecular Mass</b>	59.4 kDa
<b>AA Sequence</b>	MAVARLAAVAAWVPCRSWGWAAPVFGPHRGLSVLLARIPQRAPRWLPACRQKTSLSFLNRPDLPNLAYKCLKGKSPGIIFIPGYLSYMNGTKALAIIEEFCKSLGHACIRFDYSGVGSSDGNSEESTLGKWRKDVLSIIDDLADGPQILVGSSLGGWLMMLHAAIARPEKVVALIGVATAADTLVTKFNQLPVELKKEVEMKGVWSMPSKYSEEGVYNVQYSFIKEAEHHCLLHSPIPVNCPIRLLHGMKDDIVPWHTSMQVADRVLSTDVDVILRKHSDHRMREKADIQLLVYTIDDLIDKLSTIVN
<b>Applications</b>	Enzyme-linked Immunoabsorbent Assay Western Blot (Recombinant protein) Antibody Production Protein Array

 Tel: 1-631-559-9269    1-516-512-3133

 Email: [info@creative-biomart.com](mailto:info@creative-biomart.com)     Fax: 1-631-938-8127

 45-1 Ramsey Road, Shirley, NY 11967, USA

<b>Notes</b>	Best use within three months from the date of receipt of this protein.
<b>Storage</b>	Store at -80 centigrade. Aliquot to avoid repeated freezing and thawing.
<b>Storage Buffer</b>	50 mM Tris-HCl, 10 mM reduced Glutathione, pH=8.0 in the elution buffer.

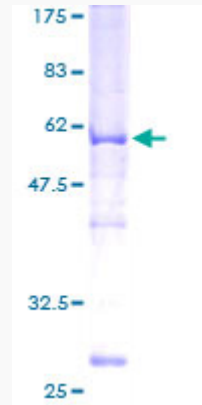
## GENE INFORMATION

<b>Gene Name</b>	ABHD10 abhydrolase domain containing 10 [ Homo sapiens ]
<b>Official Symbol</b>	ABHD10
<b>Synonyms</b>	ABHD10; abhydrolase domain containing 10; abhydrolase domain-containing protein 10, mitochondrial; FLJ11342;
<b>Gene ID</b>	55347
<b>mRNA Refseq</b>	NM_018394
<b>Protein Refseq</b>	NP_060864
<b>UniProt ID</b>	Q9NUJ1

 Tel: 1-631-559-9269 1-516-512-3133

 Email: [info@creative-biomart.com](mailto:info@creative-biomart.com)  Fax: 1-631-938-8127

 45-1 Ramsey Road, Shirley, NY 11967, USA



12.5% SDS-PAGE Stained with Coomassie Blue.

 Tel: 1-631-559-9269 1-516-512-3133

 Email: [info@creative-biomart.com](mailto:info@creative-biomart.com)  Fax: 1-631-938-8127

 45-1 Ramsey Road, Shirley, NY 11967, USA