

# Recombinant Human ABHD10 Protein, Myc/DDK-tagged, C13 and N15-labeled

**Cat. No.** ABHD10-5463H    **Lot. No.** (See product label)

## SPECIFICATION

<b>Product Overview</b>	ABHD10 MS Standard C13 and N15-labeled recombinant protein (NP_060864) with a C-terminal MYC/DDK tag, was expressed in HEK293 cells.
<b>Species</b>	Human
<b>Source</b>	HEK293
<b>Description</b>	This gene encodes a mitochondrially-localized enzyme that acts in liver cells as a hydrolase. The encoded protein removes glucuronide from mycophenolic acid acyl-glucuronide. There is a pseudogene for this gene on chromosome 6. Alternative splicing results in multiple transcript variants.
<b>Molecular Mass</b>	33.9 kDa
<b>AA Sequence</b>	MAVARLAAVAAWVPCRSWGWAAVPFGPHRGLSVLLARIPQRAPRWLPACRQKTSLSFLNRPDLPNLAYKCLKGKSPGIIFIPGYLSYMNGTKALAIIEEFCKSLGHACIRFDYSGVGSSDGNSEESTLGKWRKDVLSIIDDLADGPQILVGSSLGGWLMLHAAIARPEKVVALIGVATAADTLVTKFNQLPVELKKEVEMKGVWSMPSKYSEEGVYNVQYSFIKEAEHHCLLHSPIPVNCPIRLLHGMKDDIVPWHTSMQVADRVLSTDVDVILRKHSDHRMREKADIQLLVYTIDDLIDKLSTIVNTRTRPLEQKLISEEDLAANDILDYKDDDDKV
<b>Purity</b>	> 80% as determined by SDS-PAGE and Coomassie blue staining
<b>Stability</b>	Stable for 3 months from receipt of products under proper storage and handling

 Tel: 1-631-559-9269    1-516-512-3133

 Email: [info@creative-biomart.com](mailto:info@creative-biomart.com)     Fax: 1-631-938-8127

 45-1 Ramsey Road, Shirley, NY 11967, USA

conditions.

**Storage** Store at -80 centigrade. Avoid repeated freeze-thaw cycles.

**Concentration** 50 µg/mL as determined by BCA

**Storage Buffer** 100 mM glycine, 25 mM Tris-HCl, pH 7.3.

## GENE INFORMATION

**Gene Name** ABHD10 abhydrolase domain containing 10 [ Homo sapiens (human) ]

**Official Symbol** ABHD10

**Synonyms** ABHD10; abhydrolase domain containing 10; abhydrolase domain-containing protein 10, mitochondrial; FLJ11342;

**Gene ID** 55347

**mRNA Refseq** NM\_018394

**Protein Refseq** NP\_060864

**MIM** 618756

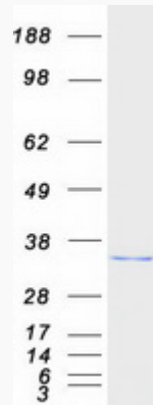
**UniProt ID** Q9NUJ1

 Tel: 1-631-559-9269 1-516-512-3133

 Email: [info@creative-biomart.com](mailto:info@creative-biomart.com)  Fax: 1-631-938-8127

 45-1 Ramsey Road, Shirley, NY 11967, USA

SDS-PAGE



 Tel: 1-631-559-9269 1-516-512-3133

 Email: [info@creative-biomart.com](mailto:info@creative-biomart.com)  Fax: 1-631-938-8127

 45-1 Ramsey Road, Shirley, NY 11967, USA