

Recombinant Human ABHD12 Protein, Myc/DDK-tagged, C13 and N15-labeled

Cat. No. ABHD12-1214H **Lot. No.** (See product label)

SPECIFICATION

Product Overview	ABHD12 MS Standard C13 and N15-labeled recombinant protein (NP_001035937) with a C-terminal MYC/DDK tag, was expressed in HEK293 cells.
Species	Human
Source	HEK293
Description	This gene encodes an enzyme that catalyzes the hydrolysis of 2-arachidonoyl glycerol (2-AG), the main endocannabinoid lipid transmitter that acts on cannabinoid receptors, CB1 and CB2. The endocannabinoid system is involved in a wide range of physiological processes, including neurotransmission, mood, appetite, pain appreciation, addiction behavior, and inflammation. Mutations in this gene are associated with the neurodegenerative disease, PHARC (polyneuropathy, hearing loss, ataxia, retinitis pigmentosa, and cataract), resulting from an inborn error of endocannabinoid metabolism. Alternatively spliced transcript variants encoding different isoforms have been noted for this gene.
Molecular Mass	44.9 kDa
AA Sequence	MRKRTEPVALEHERCAAAGSSSSGSAAAALDADCRLKQNLRLTGPAAAEPRCAAD AGMKRALGRRKGVWLRLRKILFCVLGLYIAIPFLIKLCPGIQAKLIFLNFRVVPYFIDLK KPQDQGLNHTCNYYLQPEEDVTIGVWHTVPAVWWKNAQGGKQMWYEDALASSHP IILYLHGNAGTRGGDHRVELYKVLSSLGYHVVTFDYRGWGDSVGTSPSERGMTYDAL

 Tel: 1-631-559-9269 1-516-512-3133

 Email: info@creative-biomart.com  Fax: 1-631-938-8127

 45-1 Ramsey Road, Shirley, NY 11967, USA

HVFDWIKARSGDNPVYIWGHS LGTGVATNLVRR L CERETPPDALILESPFTNIREEAK
 SHPFSVIYRYFPGFDWFFLD PITSSG IKFANDENVKHIS CPLLILHAEDDPVVPFQLGR
 KLYSIAAPARSFRDFK VQFV PFHSDLGYRHKYIYK SPELPRILREFLGKSEPEHQHTR
 TRPLEQKLISEEDLAANDILDYKDDDDKV

Purity > 80% as determined by SDS-PAGE and Coomassie blue staining

Stability Stable for 3 months from receipt of products under proper storage and handling conditions.

Storage Store at -80 centigrade. Avoid repeated freeze-thaw cycles.

Concentration 50 µg/mL as determined by BCA

Storage Buffer 100 mM glycine, 25 mM Tris-HCl, pH 7.3.

GENE INFORMATION

Gene Name [ABHD12 abhydrolase domain containing 12 \[Homo sapiens \(human\) \]](#)

Official Symbol [ABHD12](#)

Synonyms ABHD12; abhydrolase domain containing 12; C20orf22, chromosome 20 open reading frame 22; monoacylglycerol lipase ABHD12; ABHD12A; BEM46L2; dJ965G21.2; DKFZP434P106; 2-arachidonoylglycerol hydrolase; abhydrolase domain-containing protein 12; PHARC; C20orf22; DKFZp434P106;

Gene ID [26090](#)

mRNA Refseq [NM_001042472](#)

 Tel: 1-631-559-9269 1-516-512-3133

 Email: info@creative-biomart.com  Fax: 1-631-938-8127

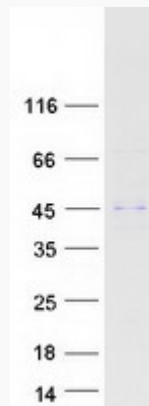
 45-1 Ramsey Road, Shirley, NY 11967, USA

Protein Refseq NP_001035937

MIM 613599

UniProt ID Q8N2K0

SDS-PAGE



 Tel: 1-631-559-9269 1-516-512-3133

 Email: info@creative-biomart.com  Fax: 1-631-938-8127

 45-1 Ramsey Road, Shirley, NY 11967, USA