

## Recombinant Human ABHD14A Protein, GST-Tagged

Cat. No. ABHD14A-076H Lot. No. (See product label)

### SPECIFICATION

<b>Product Overview</b>	Human ABHD14A full-length ORF ( NP_056222.1, 1 a.a. - 271 a.a.) recombinant protein with GST-tag at N-terminal.
<b>Species</b>	Human
<b>Source</b>	Wheat Germ
<b>Description</b>	ABHD14A (Abhydrolase Domain Containing 14A) is a Protein Coding gene. GO annotations related to this gene include hydrolase activity. An important paralog of this gene is ABHD14B.
<b>Molecular Mass</b>	56.1 kDa
<b>AA Sequence</b>	MVGALCGCWFRLLGGARPLIPLGPTVVQTSMSQSQVALLGLSLLLMLLLYVGLPGPP EQTSCLWGDPNVTVLAGLTPGNSPIFYREVLPLNQAHRVEVVLLHGKAFNSHTWEQ LGTLLQLLSQRGYRAVALDLPFGNSAPSKEASTEAGRAALLERALRDLEVQNAVLS PSLSGHYALPFLMRGHHQLHGFVPIAPTSTQNYTQEQFWAVKTPTLILYGELDHILAR ESLRQLRHLPNHSVVKLRNAGHACYLHKPQDFHLVLLAFLDHL
<b>Applications</b>	Enzyme-linked Immunoabsorbent Assay Western Blot (Recombinant protein) Antibody Production Protein Array
<b>Notes</b>	Best use within three months from the date of receipt of this protein.

 Tel: 1-631-559-9269 1-516-512-3133

 Email: [info@creative-biomart.com](mailto:info@creative-biomart.com)  Fax: 1-631-938-8127

 45-1 Ramsey Road, Shirley, NY 11967, USA

**Storage** Store at -80 centigrade. Aliquot to avoid repeated freezing and thawing.

**Storage Buffer** 50 mM Tris-HCl, 10 mM reduced Glutathione, pH=8.0 in the elution buffer.

## GENE INFORMATION

**Gene Name** [ABHD14A abhydrolase domain containing 14A \[ Homo sapiens \(human\) \]](#)

**Official Symbol** [ABHD14A](#)

**Synonyms** ABHD14A; abhydrolase domain containing 14A; Abhydrolase Domain Containing 14A; Alpha/Beta Hydrolase Domain-Containing Protein 14A; Abhydrolase Domain-Containing Protein 14A; Protein ABHD14A; EC 3.-.-.-; DORZ1; protein ABHD14A; abhydrolase domain-containing protein 14A; alpha/beta hydrolase domain-containing protein 14A

**Gene ID** [25864](#)

**mRNA Refseq** [NM\\_015407](#)

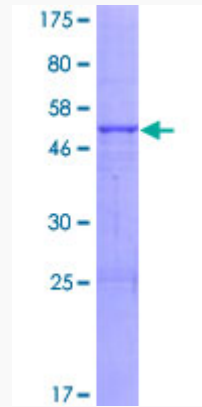
**Protein Refseq** [NP\\_056222](#)

**UniProt ID** [Q9BUJ0](#)

 Tel: 1-631-559-9269 1-516-512-3133

 Email: [info@creative-biomart.com](mailto:info@creative-biomart.com)  Fax: 1-631-938-8127

 45-1 Ramsey Road, Shirley, NY 11967, USA



12.5% SDS-PAGE Stained with Coomassie Blue.

 Tel: 1-631-559-9269 1-516-512-3133

 Email: [info@creative-biomart.com](mailto:info@creative-biomart.com)  Fax: 1-631-938-8127

 45-1 Ramsey Road, Shirley, NY 11967, USA