

## Recombinant Human ABHD14B Protein, GST-Tagged

Cat. No. ABHD14B-077H Lot. No. (See product label)

### SPECIFICATION

<b>Product Overview</b>	Human ABHD14B full-length ORF ( NP_116139.1, 1 a.a. - 210 a.a.) recombinant protein with GST-tag at N-terminal.
<b>Species</b>	Human
<b>Source</b>	Wheat Germ
<b>Description</b>	ABHD14B (Abhydrolase Domain Containing 14B) is a Protein Coding gene. Among its related pathways are Metabolism and Cytochrome P450 - arranged by substrate type. GO annotations related to this gene include hydrolase activity. An important paralog of this gene is ABHD14A.
<b>Molecular Mass</b>	48.7 kDa
<b>AA Sequence</b>	MAASVEQREGTIQVQQQALFFREALPGSGQARFSVLLLHGIRFSSETWQNLGTLHR LAQAGYRAVAIDLPLGLGHSKEAAAPAPIGELAPGSFLAAVDALELGPPVVISPSLSG MYSPLFLTAPGSQPLPGFVPVAPICTDKINAANYASVKTPALIVYGDQDPMGQTSFEH LKQLPNHRVLMKGGAGHPCYLDKPEEWHTGLLDLFLQGLQ
<b>Applications</b>	Enzyme-linked Immunoabsorbent Assay Western Blot (Recombinant protein) Antibody Production Protein Array
<b>Notes</b>	Best use within three months from the date of receipt of this protein.

 Tel: 1-631-559-9269 1-516-512-3133

 Email: [info@creative-biomart.com](mailto:info@creative-biomart.com)  Fax: 1-631-938-8127

 45-1 Ramsey Road, Shirley, NY 11967, USA

**Storage** Store at -80 centigrade. Aliquot to avoid repeated freezing and thawing.

**Storage Buffer** 50 mM Tris-HCl, 10 mM reduced Glutathione, pH=8.0 in the elution buffer.

## GENE INFORMATION

**Gene Name** ABHD14B abhydrolase domain containing 14B [ Homo sapiens ]

**Official Symbol** ABHD14B

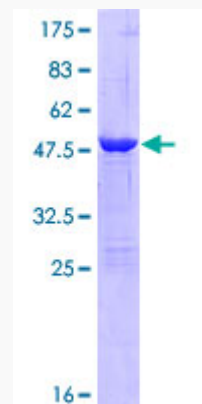
**Synonyms** ABHD14B; abhydrolase domain containing 14B; abhydrolase domain-containing protein 14B; CIB; MGC15429; CCG1-interacting factor B; cell cycle gene 1-interacting factor B;

**Gene ID** 84836

**mRNA Refseq** NM\_001146314

**Protein Refseq** NP\_001139786

**UniProt ID** Q96IU4



 Tel: 1-631-559-9269 1-516-512-3133

 Email: [info@creative-biomart.com](mailto:info@creative-biomart.com)  Fax: 1-631-938-8127

 45-1 Ramsey Road, Shirley, NY 11967, USA



12.5% SDS-PAGE Stained with Coomassie Blue.

 Tel: 1-631-559-9269 1-516-512-3133

 Email: [info@creative-biomart.com](mailto:info@creative-biomart.com)  Fax: 1-631-938-8127

 45-1 Ramsey Road, Shirley, NY 11967, USA