

Recombinant Human ABHD14B Protein, Myc/DDK-tagged, C13 and N15-labeled

Cat. No. ABHD14B-1521H **Lot. No.** (See product label)

SPECIFICATION

Product Overview	ABHD14B MS Standard C13 and N15-labeled recombinant protein (NP_116139) with a C-terminal MYC/DDK tag, was expressed in HEK293 cells.
Species	Human
Source	HEK293
Description	ABHD14B (Abhydrolase Domain Containing 14B) is a Protein Coding gene. Diseases associated with ABHD14B include Hypotonia-Cystinuria Syndrome. Among its related pathways are Cytochrome P450 - arranged by substrate type and Metabolism. Gene Ontology (GO) annotations related to this gene include hydrolase activity. An important paralog of this gene is ABHD14A.
Molecular Mass	22.3 kDa
AA Sequence	MAASVEQREGTIQVQGQALFFREALPGSGQARFSVLLLHGIRFSSETWQNLGTLHR LAQAGYRAVAIDLPLGLGHSKEAAAPAPIGELAPGSFLAAVDALELGPPVVISPSLSG MYSLPFLTAPGSQPLPGFVPVAPICTDKINAANYASVKTPALIVYGDQDPMGQTSFEH LKQLPNHRVLIMKGAGHPCYLDKPEEWHTGLLDLFLQGLQTRTRPLEQKLISEEDLAA NDILDYKDDDDKV
Purity	> 80% as determined by SDS-PAGE and Coomassie blue staining
Stability	Stable for 3 months from receipt of products under proper storage and handling

 Tel: 1-631-559-9269 1-516-512-3133

 Email: info@creative-biomart.com  Fax: 1-631-938-8127

 45-1 Ramsey Road, Shirley, NY 11967, USA

conditions.

Storage Store at -80 centigrade. Avoid repeated freeze-thaw cycles.

Concentration 50 µg/mL as determined by BCA

Storage Buffer 100 mM glycine, 25 mM Tris-HCl, pH 7.3.

GENE INFORMATION

Gene Name [ABHD14B abhydrolase domain containing 14B \[Homo sapiens \(human\) \]](#)

Official Symbol [ABHD14B](#)

Synonyms ABHD14B; abhydrolase domain containing 14B; abhydrolase domain-containing protein 14B; CIB; MGC15429; CCG1-interacting factor B; cell cycle gene 1-interacting factor B;

Gene ID [84836](#)

mRNA Refseq [NM_032750](#)

Protein Refseq [NP_116139](#)

UniProt ID [Q96IU4](#)

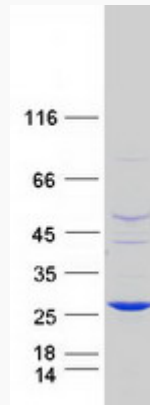
 Tel: 1-631-559-9269 1-516-512-3133

 Email: info@creative-biomart.com  Fax: 1-631-938-8127

 45-1 Ramsey Road, Shirley, NY 11967, USA



SDS-PAGE



Tel: 1-631-559-9269 1-516-512-3133

Email: info@creative-biomart.com Fax: 1-631-938-8127

45-1 Ramsey Road, Shirley, NY 11967, USA