

## Recombinant Human ABHD16A protein, GST-tagged

Cat. No. ABHD16A-090H Lot. No. (See product label)

### SPECIFICATION

<b>Product Overview</b>	Human ABHD16A full-length ORF ( NP_066983.1, 1 a.a. - 558 a.a.) recombinant protein with GST-tag at N-terminal.
<b>Species</b>	Human
<b>Source</b>	Wheat Germ
<b>Description</b>	A cluster of genes, BAT1-BAT5, has been localized in the vicinity of the genes for TNF alpha and TNF beta. These genes are all within the human major histocompatibility complex class III region. The protein encoded by this gene is thought to be involved in some aspects of immunity. [provided by RefSeq
<b>Form</b>	50 mM Tris-HCl, 10 mM reduced Glutathione, pH=8.0 in the elution buffer.
<b>Molecular Mass</b>	89.6 kDa
<b>AA Sequence</b>	<p>MAKLLSCVLGPRLYKIYRERDSEAPASVPETPTAVTAPHSSSWDTYYQPRALEKH            ADSILALASVFWSISYYSSPFAFFYLRYKGYLSLSKVVPFVSHYAGTLLLLLAGVACLRG            IGRWTNPQYRQFITILEATHRNQSSSENKRQLANYNDFRSWPVDFHWEESPSSRKES            RGGPSRRGVALLRPEPLHRGTADTLNLRVKKLPCQITSYLVAHTLGRRMLYPGSVYL            LQKALMPVLLQGQARLVEECNGRRAKLLACDGNEIDTMFVDRRGTAEPQGQKLVIC            CEGNAGFYEVGCVSTPLEAGYSVLGWNHPGFAGSTGVFPFQNEANAMDVVVQFAI            HRLGFQPDIIIYAWSIGGFTATWAAMSYPDVSAMILDASFDDLPLALKVMPDSWR            GLVTRTVRQHLNLNNAEQLCRYQGPVLLIRRTKDEIITTTVPEDIMSNRGNLKKLL            QHRYPRVMAEEGLRVVRQWLEASSQLEEASIYSRWEVEEDWCLSVLRSYQAEHGP</p>

 Tel: 1-631-559-9269 1-516-512-3133

 Email: [info@creative-biomart.com](mailto:info@creative-biomart.com)  Fax: 1-631-938-8127

 45-1 Ramsey Road, Shirley, NY 11967, USA

DFPWSVGEDMSADGRRQLALFLARKHLHNFEATHCTPLPAQNFQMPWHL

<b>Notes</b>	Best use within three months from the date of receipt of this protein.
<b>Storage</b>	Store at -80 centigrade. Aliquot to avoid repeated freezing and thawing.
<b>Storage Buffer</b>	50 mM Tris-HCl, 10 mM reduced Glutathione, pH=8.0 in the elution buffer.

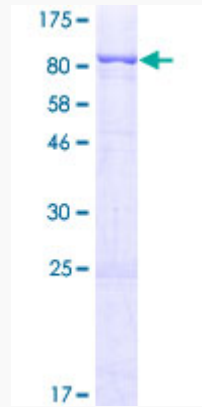
## GENE INFORMATION

<b>Gene Name</b>	ABHD16A abhydrolase domain containing 16A [ Homo sapiens ]
<b>Official Symbol</b>	ABHD16A
<b>Synonyms</b>	abhydrolase domain containing 16A; PP199; BAT5; abhydrolase domain-containing protein 16A; NG26; EC 3.-.-.; D6S82E; G5; HLA-B associated transcript 5; HLA-B-associated transcript 5; Protein G5;
<b>Gene ID</b>	7920
<b>mRNA Refseq</b>	NM_021160.2
<b>Protein Refseq</b>	NP_066983.1
<b>MIM</b>	142620
<b>UniProt ID</b>	O95870

 Tel: 1-631-559-9269 1-516-512-3133

 Email: [info@creative-biomart.com](mailto:info@creative-biomart.com)  Fax: 1-631-938-8127

 45-1 Ramsey Road, Shirley, NY 11967, USA



Tel: 1-631-559-9269 1-516-512-3133

Email: [info@creative-biomart.com](mailto:info@creative-biomart.com) Fax: 1-631-938-8127

45-1 Ramsey Road, Shirley, NY 11967, USA