

Recombinant Human ABHD17B Protein, GST-tagged

Cat. No. ABHD17B-3670H **Lot. No.** (See product label)

SPECIFICATION

Product Overview	Human FAM108B1 full-length ORF (AAH44576.1, 1 a.a. - 288 a.a.) recombinant protein with GST-tag at N-terminal.
Species	Human
Source	Wheat Germ
Description	ABHD17B (Abhydrolase Domain Containing 17B) is a Protein Coding gene. GO annotations related to this gene include hydrolase activity and serine-type peptidase activity. An important paralog of this gene is ABHD17A.
Molecular Mass	58.6 kDa
AA Sequence	MNLSFSELCCCLFCCPPCPGKIASKLAFLPPDPTYTLMCDESGSRWTLHLSERADW QYSSREKDAIECFMTRTSKGNRIACMFVRCSPNAKYTLFESHGNAVDLGQMSSFYIG LGSRINCNIFSYDYSYGASSGKPTKKNLYADIEAAWLALRTRYGIRPENVIYGKSIG TVPSVDLAARYESA AVILHSPLTSGMRVAFPDTKKTYCFDAFPNIDKISKITSPVLIHIG TEDEVIDFSHGLALFERCQRPVEPLWVEGAGHNDVELYGQYLERLQKQFVSQELVNL
Applications	Enzyme-linked Immunoabsorbent Assay Western Blot (Recombinant protein) Antibody Production Protein Array
Notes	Best use within three months from the date of receipt of this protein.

 Tel: 1-631-559-9269 1-516-512-3133

 Email: info@creative-biomart.com  Fax: 1-631-938-8127

 45-1 Ramsey Road, Shirley, NY 11967, USA

Storage Store at -80 centigrade. Aliquot to avoid repeated freezing and thawing.

Storage Buffer 50 mM Tris-HCl, 10 mM reduced Glutathione, pH=8.0 in the elution buffer.

GENE INFORMATION

Gene Name ABHD17B abhydrolase domain containing 17B [Homo sapiens (human)]

Official Symbol ABHD17B

Synonyms FAM108B1; family with sequence similarity 108, member B1; C9orf77, chromosome 9 open reading frame 77; abhydrolase domain-containing protein FAM108B1; CGI 67; CGI-67; C9orf77; RP11-409O11.2;

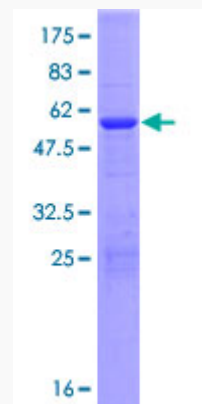
Gene ID 51104

mRNA Refseq NM_001025780

Protein Refseq NP_001020951

UniProt ID Q5VST6

Quality Control Testing



 Tel: 1-631-559-9269 1-516-512-3133

 Email: info@creative-biomart.com  Fax: 1-631-938-8127

 45-1 Ramsey Road, Shirley, NY 11967, USA



12.5% SDS-PAGE Stained with Coomassie Blue.

 Tel: 1-631-559-9269 1-516-512-3133

 Email: info@creative-biomart.com  Fax: 1-631-938-8127

 45-1 Ramsey Road, Shirley, NY 11967, USA