

Recombinant Human ABHD2 protein, GST-tagged

Cat. No. ABHD2-6465H Lot. No. (See product label)

SPECIFICATION

Product Overview	Recombinant Human ABHD2 protein(260-425 aa), fused with N-terminal GST tag, was expressed in E. coli.
Species	Human
Source	E.coli
ProteinLength	260-425 aa
Tag	N-GST
Form	The purified protein was Lyophilized from sterile PBS (58mM Na ₂ HPO ₄ , 17mM NaH ₂ PO ₄ , 68mM NaCl, pH7.4). 5 % trehalose and 5 % mannitol are added as protectant before lyophilization.
Purity	85%, by SDS-PAGE with Coomassie Brilliant Blue staining.
Storage	Short-term storage: Store at 2-8°C for (1-2 weeks). Long-term storage: Aliquot and store at -20°C to -80°C for up to 3 months, reconstitution with sterile water and addition of an equal volume of glycerol. Avoid repeat freeze-thaw cycles.
Reconstitution	Reconstitute at 0.25 µg/µl in 200 µl sterile water for short-term storage. After reconstitution with sterile water, if glycerol has no effect on subsequent experiments, it is recommended to add an equal volume of glycerol for long-term storage.

 Tel: 1-631-559-9269 1-516-512-3133

 Email: info@creative-biomart.com  Fax: 1-631-938-8127

 45-1 Ramsey Road, Shirley, NY 11967, USA

AA Sequence MADNMKKIILSHRQALFGDHVKKPQSLEDTDLRSRLYTATSLMQIDDNVMRKFHGYNS
LKEYEEEEESCMRYLHRIYVPLMLVNAADDPLVHESLLTIPKSLSEKRENVMFVPLPHG
GHLGFFEGSVLFPEPLTWMDKLVVEYANAICQWERNKLQCSDEQVEADLE

GENE INFORMATION

Gene Name [ABHD2 abhydrolase domain containing 2 \[Homo sapiens \]](#)

Official Symbol [ABHD2](#)

Synonyms ABHD2; abhydrolase domain containing 2; abhydrolase domain-containing protein 2; LABH2; protein PHPS1-2; lung alpha/beta hydrolase 2; alpha/beta hydrolase domain containing protein 2; HS1-2; PHPS1-2; MGC26249; MGC111112;

Gene ID [11057](#)

mRNA Refseq [NM_007011](#)

Protein Refseq [NP_008942](#)

MIM [612196](#)

UniProt ID [P08910](#)

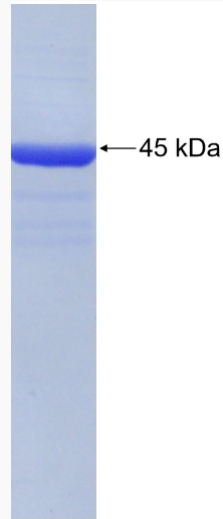
 Tel: 1-631-559-9269 1-516-512-3133

 Email: info@creative-biomart.com  Fax: 1-631-938-8127

 45-1 Ramsey Road, Shirley, NY 11967, USA



SDS-PAGE



Tel: 1-631-559-9269 1-516-512-3133

Email: info@creative-biomart.com Fax: 1-631-938-8127

45-1 Ramsey Road, Shirley, NY 11967, USA